

NPS

# THE SWEET CUPCAKE LOFT "L" SHAPE (WITH GARAGE)

LIVING AREA	82.84
TOTAL AREA	155.37
NUMBER OF FLOORS	2
ROOF SLOPE	45/1.4
BUILDING AREA	209.29
HOUSE LENGTH	19.55
HOUSE WIDTH	15.98
HOUSE HEIGHT	8.3

€ 35.860

## BENEFITS

THE SWEET CUPCAKE LOFT IN THE SHAPE OF AN "L" WITH GARAGE



The 2-storey modular house with garage can be easily integrated in any area you choose, whether rural or urban. And it's easy to build, assemble and install. This house project will appeal to those who want to create a cosy holiday residence, garden house, creative or working space. It can also be adapted for permanent living. It is the optimal choice for those looking for a cost-effective way to build a home - modular homes are often more affordable than traditional housing.

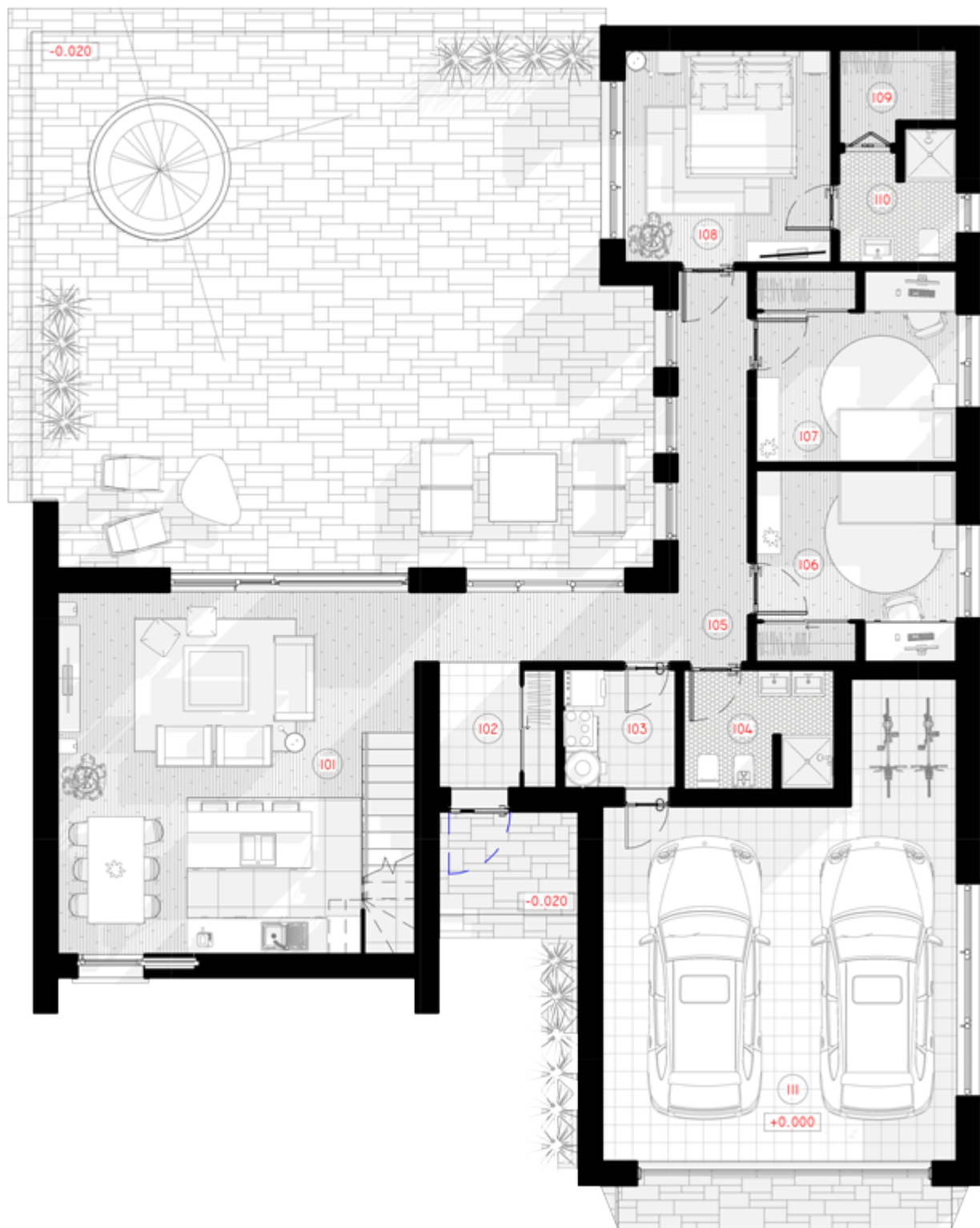
On the second floor of the house, there is a loft that can be used as a study or bedroom. The ground floor has standard spaces such as the parents' bedroom, several children's rooms and a living room/kitchen. There are two sanitary facilities, which can be equipped with a shower, bath or toilet. There is also a vestibule (tambour), which helps to separate the indoor-outdoor spaces and to protect the dwelling from the cold, wind or other natural phenomena. A compact wardrobe in the vestibule will give you a place to store your shoes and outdoor clothes.

The project is fully ready for living, with all utilities in place. In addition, future settlers can choose the level of furnishing and finishing they want, and the houses are available both partially finished and fully furnished and ready for occupation.

THE SWEET CUPCAKE LOFT "L" SHAPE (WITH GARAGE) frame houses are made from a lightweight thin-walled steel frame construction. They have excellent thermal and acoustic insulation and use durable and environmentally friendly building materials. Carefully considered technical characteristics and engineering solutions allow the dwellings to achieve an A++ energy performance class.

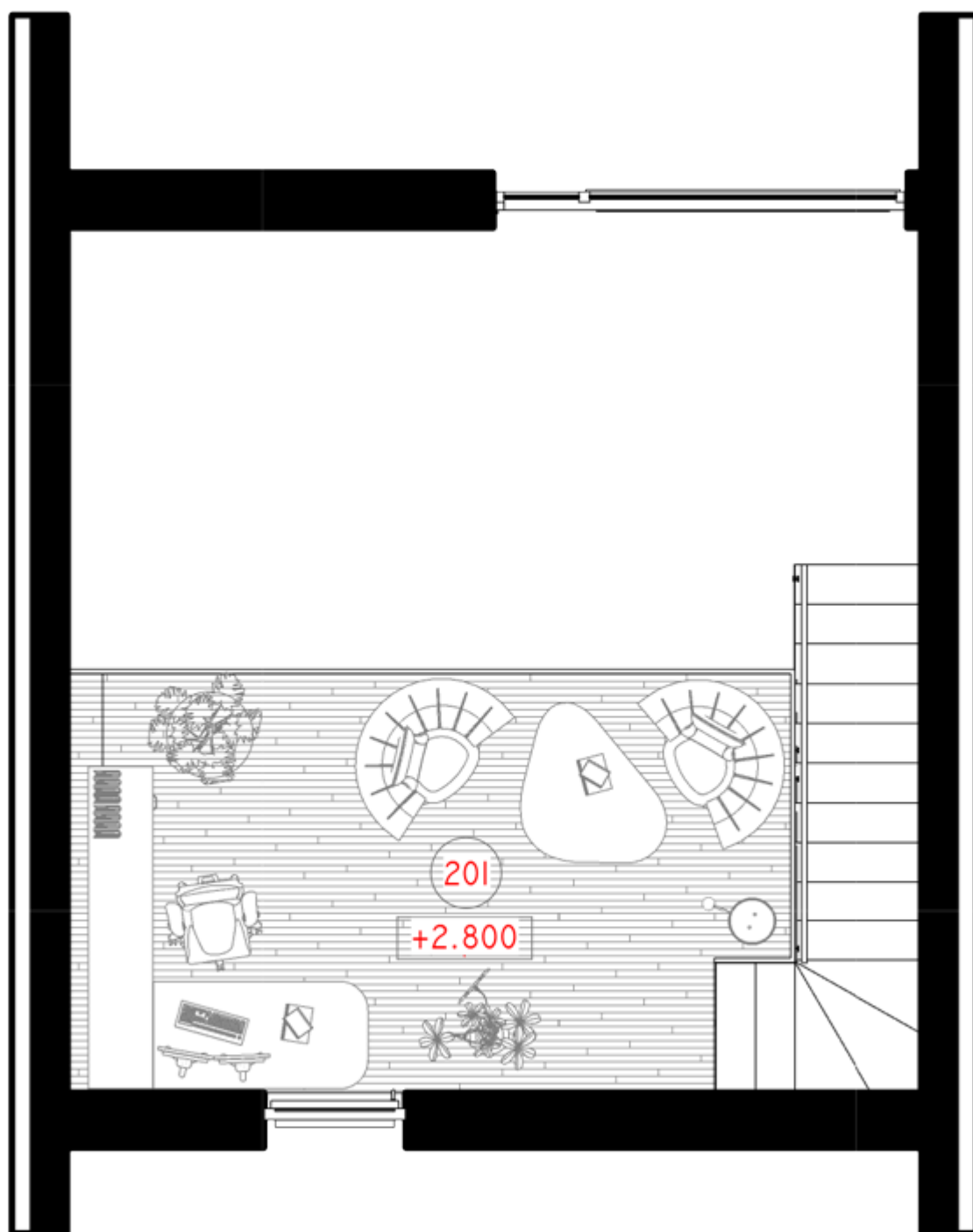






# 1ST FLOOR PLAN

101 LIVING ROOM-KITCHEN	34.13 m <sup>2</sup>
102 TAMBOUR	4.16 m <sup>2</sup>
103 BOILER ROOM	3.80 m <sup>2</sup>
104 BATHROOM	5.06 m <sup>2</sup>
105 THE HALL - CORRIDOR	12.79 m <sup>2</sup>
106 CHILDREN'S ROOM	10.98 m <sup>2</sup>
107 CHILDREN'S ROOM	10.98 m <sup>2</sup>
108 PARENTS BEDROOM	12.60 m <sup>2</sup>
109 WARDROBE	2.79 m <sup>2</sup>
110 WC	4.06 m <sup>2</sup>
111 GARAGE	39.87 m <sup>2</sup>
<b>TOTAL:</b>	<b>141.22 m<sup>2</sup></b>



# 2ND FLOOR PLAN

201 WORKROOM	14.16 m <sup>2</sup>
<b>TOTAL:</b>	14.16 m <sup>2</sup>

## BASIC





WALLS - LPPK	-
OVERLAY - LPPK	-
STAIRS - LPPK	-
ROOF - LPPK	-
PRICE €35.860	

LPPK - Lightweight thin-walled frame construction.

Prices are for prefabricated structures ready for assembly at the factory.

# ECONOMIC



WALLS - LPPK	-
OVERLAY - LPPK	-
ROOF - LPPK	-
STAIRS - LPPK	-
INSULATION - MULTILAYER PANELS	-
WINDOWS, EXTERIOR DOORS - PVC	-
PRICE	
€49.700	

LPPK - Lightweight thin-walled frame construction.

Prices are for prefabricated structures ready for assembly at the factory.

Prices are without garage and carport.

# STANDART



WALLS - LPPK	-
OVERLAY - LPPK	-
ROOF - LPPK	-
STAIRS - LPPK	-
INSULATION - MULTILAYER PANELS	-
WINDOWS, EXTERIOR DOORS, PVC	-
FACEDE DECORATION	-
PRICE €64.705	

LPPK - Lightweight thin-walled frame construction.

Prices are for prefabricated structures ready for assembly at the factory.

Prices are without garage and carport.