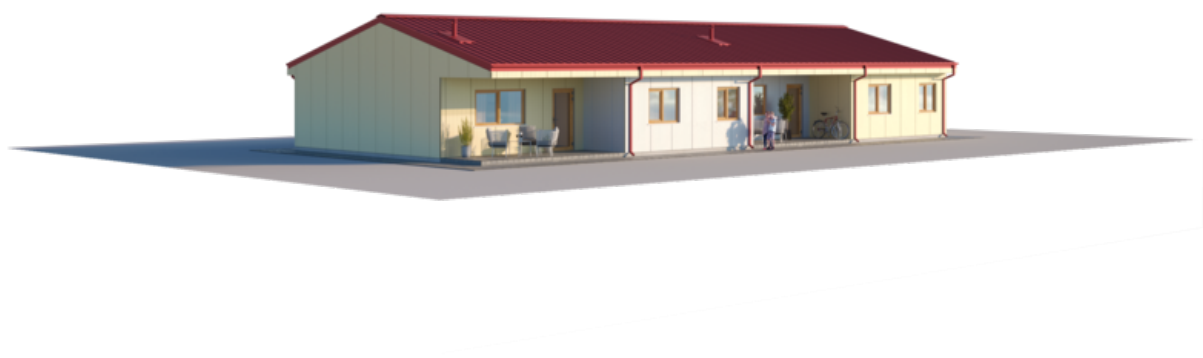




# SOCIAL HOUSE

LIVING AREA	155.31
TOTAL AREA	184.16
NUMBER OF FLOORS	1

€ 24.636







# BASIC



WALLS - LPPK	-
OVERLAY - LPPK	-
STAIRS - LPPK	-
ROOF - LPPK	-
PRICE	
€24.636	

LPPK - Lightweight thin-walled frame construction.

Prices are for prefabricated structures ready for assembly at the factory.

Prices are without garage and carport.

# STANDART

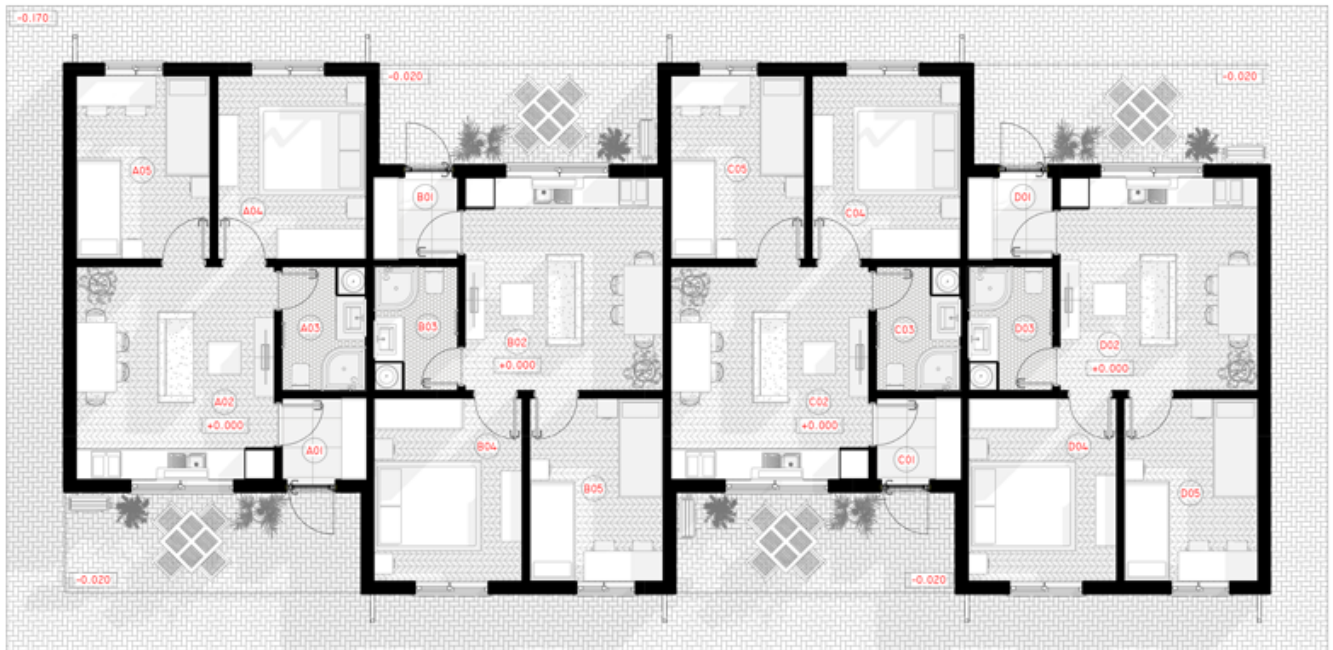


WALLS - LPPK	-
OVERLAY - LPPK	-
STAIRS - LPPK	-
ROOF - LPPK	-
INSULATION - MULTILAYER PANELS	-
WINDOWS, EXTERIOR DOORS, PVC	-
FACADE DECORATION	-
PRICE	
€58.067	

LPPK - Lightweight thin-walled frame construction.

Prices are negotiated according to the choice of materials. Prices are for prefabricated structures ready for assembly at the factory.

Prices are without garage and carport.



# 1ST FLOOR PLAN

01	TAMBOUR	2.89 m <sup>2</sup>
02	LIVING - DINNING ROOM	17.41 m <sup>2</sup>
03	BATHROOM	4.32 m <sup>2</sup>
04	MASTER BEDROOM	11.27 m <sup>2</sup>
05	BEDROOM	10.15 m <sup>2</sup>
<b>VISO:</b>		<b>46.04 m<sup>2</sup></b>