

THE CLEAR BOX

LIVING AREA	102.38
TOTAL AREA	188.35
NUMBER OF FLOORS	1
ROOF SLOPE	1.4
BUILDING AREA	281.82
HOUSE LENGTH	17.85
HOUSE WIDTH	22.98
HOUSE HEIGHT	5.18

€ 2.928 € 2.420

HOUSE PROJECT THE CLEAR BOX

Are you looking for an exclusive, unique housing concept? Do you need a planned entrance to the plot from the Southside? Then "CLEAR BOX" is a smart choice. This T-shaped elevated single-storey house project with a garage is your dream, that might come true. The total area of the house is 188.35 sq. meters (102.38 sq. m of living space).

The combined roof of the house and the garage allows a family to park a pair of cars at the covered terrace next to the house. The flat roof does not inflate construction costs, it is easy to insulate, which is very important for achieving A + energy efficiency class. T- shaped contemporary housing project, it's rational layout creates luxury living space and cozy bedrooms. There are also handy utility rooms. Wooden siding or clinker decor creates a modern and complete view of the exterior design of your residence.

This house is perfect for a family of 4 - 5 persons, with a double bedroom, two single rooms for children, 2 bathrooms, and a spacious 41.37 sq. meters living room connected to the kitchen. There is enough space for green areas, paved paths, and terraces outside the house. The modern house is the best solution for everyone who wants to live a harmonious life, who care about the well-being of their family and seek comfort. Typical technical drawings will help you choose the most suitable style and

design of your dream house, and it will be easier to visualize your housing ideas.



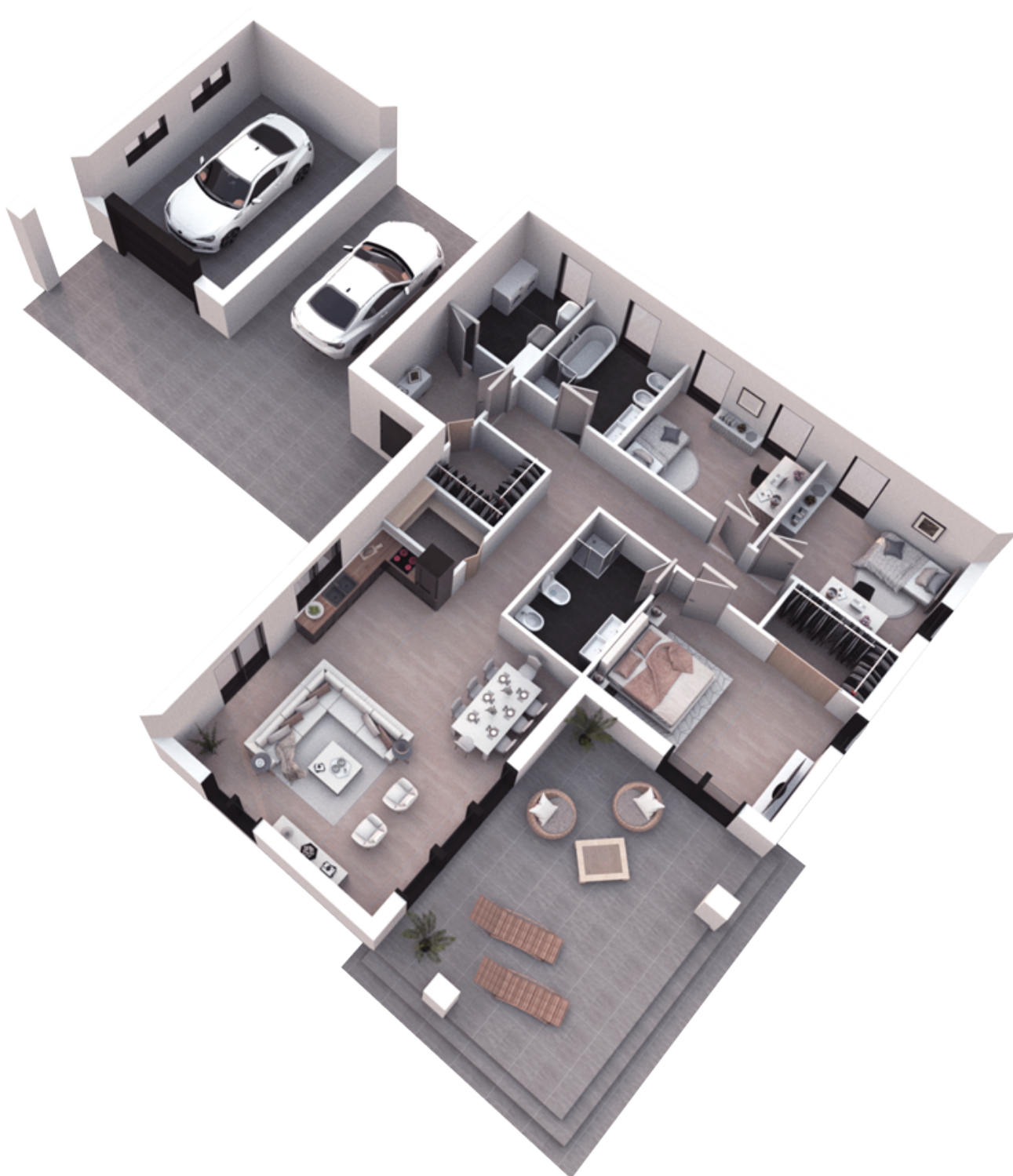




1ST FLOOR PLAN

101 CORRIDOR	6.29m ²
102 BOILER ROOM	6.33 m ²
103 CLOSET	4.05 m ²
104 HALL-CORRIDOR	16.45 m ²
105 BATHROOM	8.49 m ²
106 CHILDRENS ROOM	12.00m ²
107CHILDRENS ROOM	12.00 m ²

108 CHILDRENS ROOM KITCHEN-LIVING ROOM PANTRY SHED BATHROOM CARPORT BATHROOM CLOSET	3.86 m ²
109 PARENTS BEDROOM	17.00 m ²
110 BATHROOM	7.28 m ²
111 PANTRY	2.76 m ²
112 KITCHEN-LIVING ROOM	41.37 m ²
113 CARPORT	27.40 m ²
114GARAGE	27.00 m ²
TOTAL:	192.29 m ²



3D PLAN