

THE CONCRETE BOX

LIVING AREA	131.66
TOTAL AREA	183.48
NUMBER OF FLOORS	2
ROOF SLOPE	1.4
BUILDING AREA	179,4116
LENGTH	12.52
WIDTH	14.33
HEIGHT	7.63

PRICE ~~€ 2.928~~ € 2.420

HOUSE PROJECT THE CLEAR BOX

Do you enjoy going outside, sitting in an open-air at the balcony on a warm summer day with a cup of coffee, listening to the birds chirping, or spending an afternoon with a book? If it is so, you must choose a two-storey square-shaped house project with a balcony. The modern house project perfectly fits into a narrow plot. It is a great choice for those who like watching life from the above.

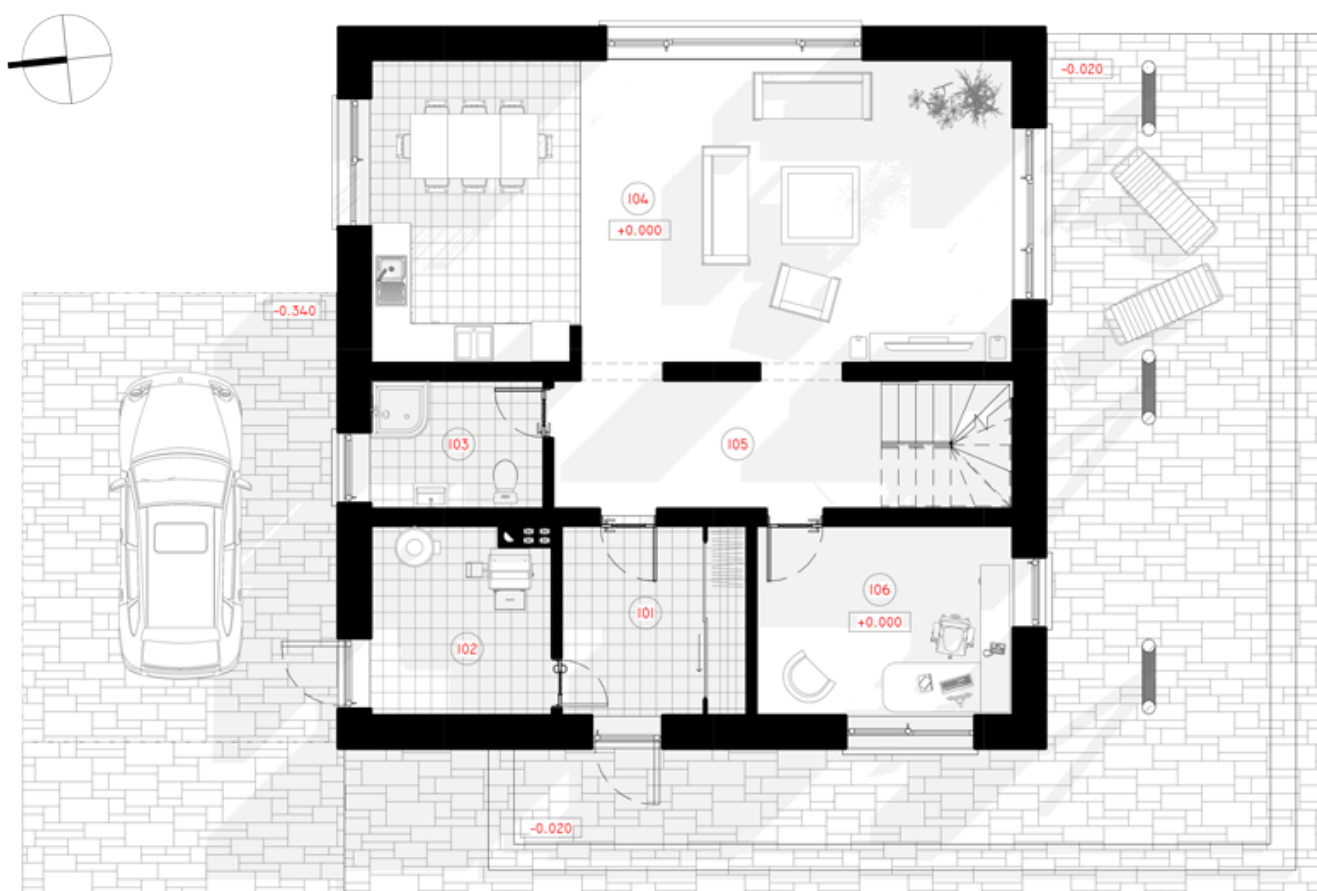
On the ground floor architects designed a spacious 47.22 sq. meters kitchen with an open living room and an 11.80 sq. meters study room. A great interior accent can be a stair set. Upstairs we have a spacious master bedroom, two children's rooms, 2 special spaces for wardrobes. If you create a nice interior design, choose the right furniture, you set up a perfect dream home, with plenty of space for the family and reception of guests. The modern architecture allows you to create a cozy, pleasant, and tidy home and its surroundings. Large windows – a natural source of light. Rational layout lets you create a dream home for a harmonious life. The house where each family member will be able to interact with others in the open spaces, but will also have a private corner for sleep and private moments. Moreover, it is your chance to move away from the living at the traditional block of a house, reminding us of life in an anthill. Personal family residence creates you an oasis of coziness and luxury. And the most important issue, we have to admit is – your own parking space for a family

car. No fights for parking space in the narrow yard with your neighbors anymore.

Two-storey house projects are for those who dream about spacious family housing. Typical technical drawing allows you to start the construction process immediately, save sketching costs.

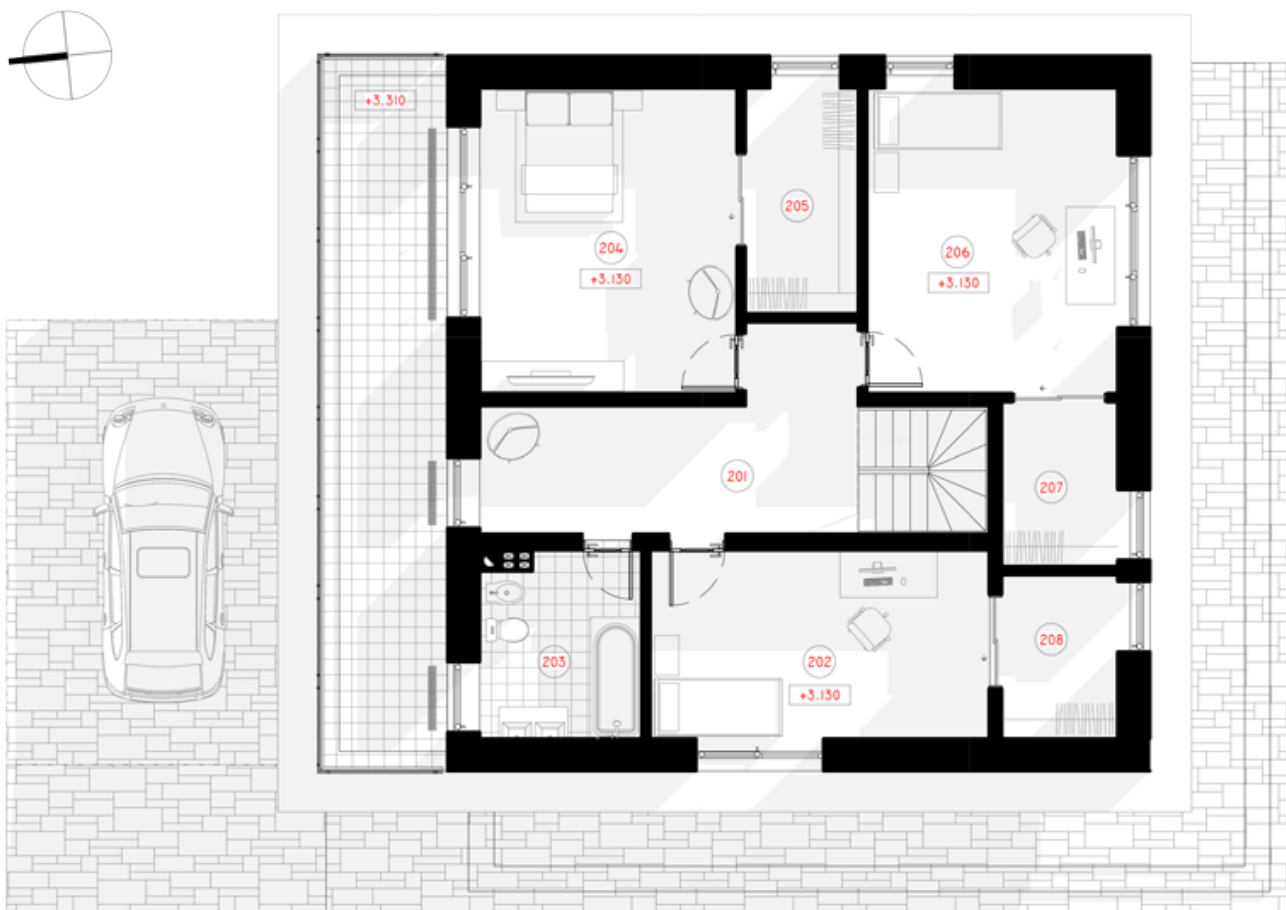






1ST FLOOR PLAN

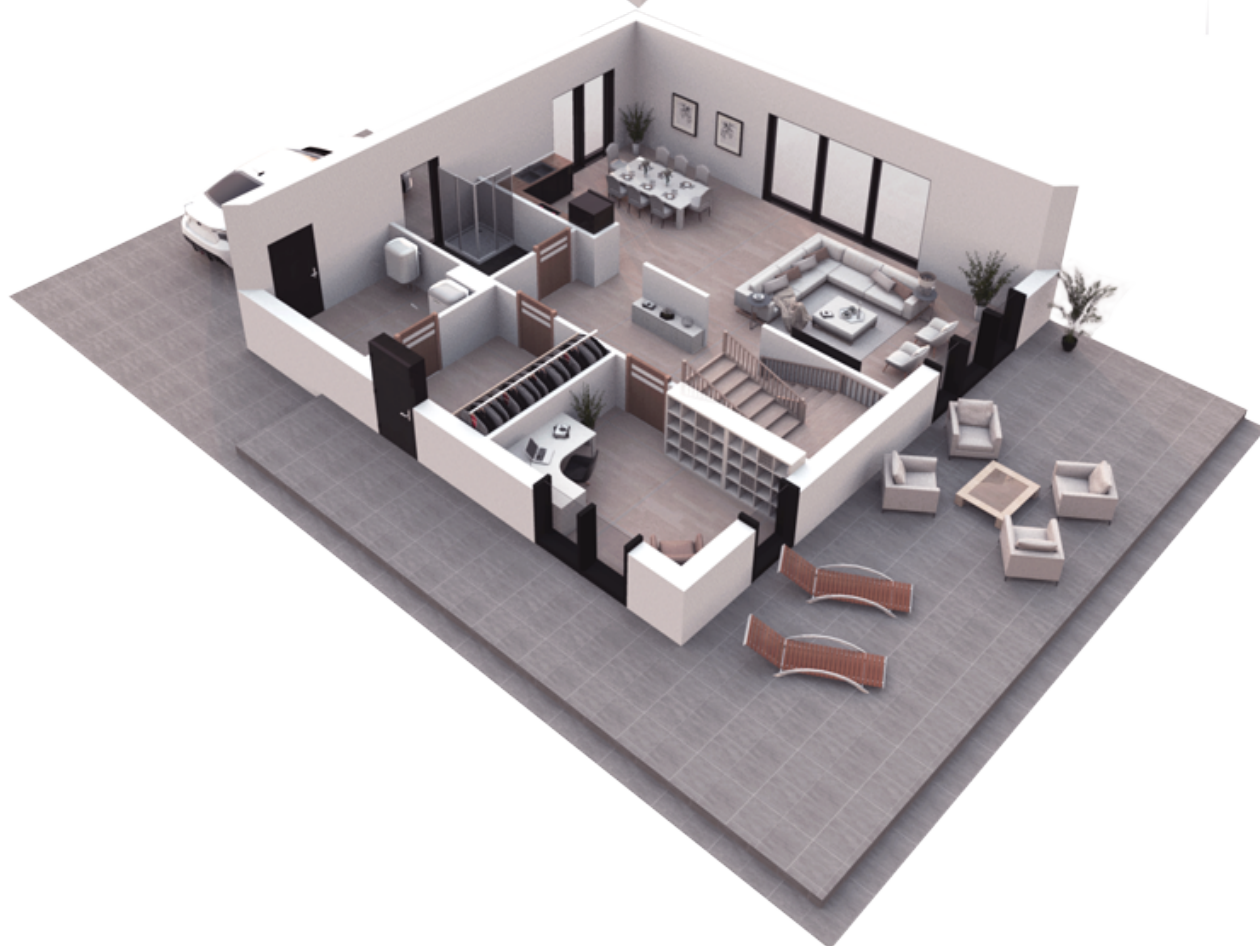
101 CORRIDOR	8.53 m ²
102 BOILER ROOM	8.07 m ²
103 BATHROOM	5.40 m ²
104 KITCHEN-LIVING ROOM	47.22 m ²
105 HALL-STAIRCASE	11.77 m ²
106 WORKROOM	11.80 m ²
TOTAL:	92.79m²



2ND FLOOR PLAN

201 HALL-STAIRCASE	14.18 m ²
202 CHILDRENS ROOM	15.69 m ²
203 BATHROOM	7.19m ²
204 PARENTS BEDROOM	19.30 m ²
205 CLOSET	6.21 m ²
206 CHILDRENS ROOM	18.82 m ²
207 CLOSET	4.65 m ²

208 CLOSET	4.63 m ²
TOTAL:	90,69m ²



3D PLAN