

# THE COZY BOX

|                  |        |
|------------------|--------|
| LIVING AREA      | 96.66  |
| TOTAL AREA       | 197.31 |
| NUMBER OF FLOORS | 1      |
| ROOF SLOPE       | 1.4    |
| BUILDING AREA    | 270.22 |
| LENGTH           | 24.07  |
| WIDTH            | 24.01  |
| HEIGHT           | 5.50   |

PRICE

€ 2.928

€ 2.420

## HOUSE PROJECT THE COZY BOX

Seeking to explore quality, comfort, and luxury? Then this modern house project is the best choice for you. THE COZY BOX is a smart decision for the hosts who want to live in a tidy house, hate mess and chaos, making us constantly to pick up children's toys or uneven laundry around the house. Typical technical drawing lets you reduce house design and architecture costs. Customer feedback will help to make the most appropriate decision when choosing the shape and layout of the housing. The modern house project is based on short term construction duration and favorable price.

The single-storey house project is convenient for those who want to have their own home quickly, needs efficiency in using the whole space. Easily reachable A plus energy efficiency class, reduce heating costs. Complete living space (96,66 sq. meters) suitable for 4-5 family members. The layout provides a cozy master bedroom (16,01 sq. meters), two children's rooms ( 12,38; 12, 35 sq. meters), and a studio (10.86 sq. meters). The studio is a real bonus for those who work from home or runs their own business: it is important to work not counting the time spent near the computer. There are two toilets, separate 3,25 sq. meters space for the laundry room.

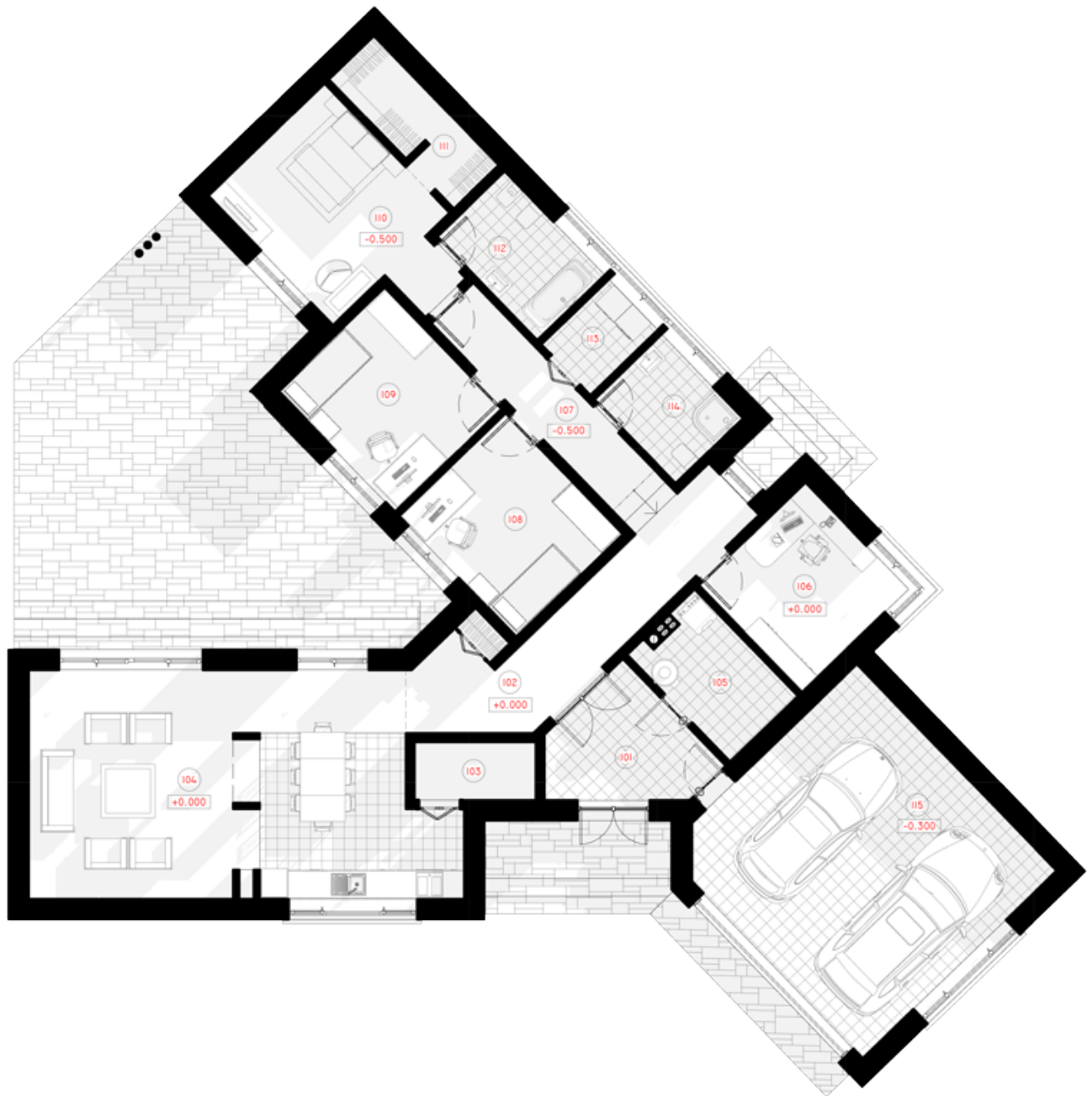
Each household item, family closing, and home textile will have a proper place to fit in. In this house, there is a spacious living room connected with an open kitchen ( 45,09 sq. meters). It has direct

access to the front porch. Modern technical drawings design exclusive ideas for your convenience at home. It is a modern contemporary choice. Single-storey house projects are the most popular choice around the world. It breaks the stereotype that the construction process is a long term engagement, which requires enormous, unaffordable costs.









# 1ST FLOOR PLAN

|                   |                      |
|-------------------|----------------------|
| 101 CORRIDOR      | 8.20m <sup>2</sup>   |
| 102 HALL-CORRIDOR | 15.86 m <sup>2</sup> |
| 103 PANTRY        | 3.51 m <sup>2</sup>  |

|                         |                      |
|-------------------------|----------------------|
| 104 KITCHEN-LIVING ROOM | 45.09 m <sup>2</sup> |
| 105 BOILER ROOM         | 6.63 m <sup>2</sup>  |
| 106 WORKROOM            | 10.84 m <sup>2</sup> |
| 106 CORRIDOR            | 7.55 m <sup>2</sup>  |
| 106 CHILDRENS ROOM      | 12.38 m <sup>2</sup> |
| 106 CHILDRENS ROOM      | 12.35m <sup>2</sup>  |
| 106 PARENTS BEDROOM     | 16.01m <sup>2</sup>  |
| 106 CLOSET              | 5.57 m <sup>2</sup>  |
| 106 BATHROOM            | 6.67 m <sup>2</sup>  |
| 106 LAUNDRY             | 3.25 m <sup>2</sup>  |
| 106 BATHROOM            | 5.42 m <sup>2</sup>  |
| 106 GARAGE              | 37.98 m <sup>2</sup> |
| <b>TOTAL:</b>           | 197.31m <sup>2</sup> |



**3D PLAN**