

THE CUPCAKE CASE

| | |
|------------------|----------|
| LIVING AREA | 90.77 |
| TOTAL AREA | 127.35 |
| NUMBER OF FLOORS | 1 |
| ROOF SLOPE | 38 / 1.4 |
| BUILDING AREA | 222.69 |
| LENGTH | 20.28 |
| WIDTH | 16.11 |
| HEIGHT | 6.84 |

PRICE ~~€ 2.928~~ € 2.420

HOUSE PROJECT THE CUPCAKE CASE

Your first choice and appreciation have always been classical designs? Then a single-storey house project with a gable roof is just for you. When considering a house project, people often have to answer the question - what type of roof to choose? The fact is that modern technology provides an opportunity for a wide choice.

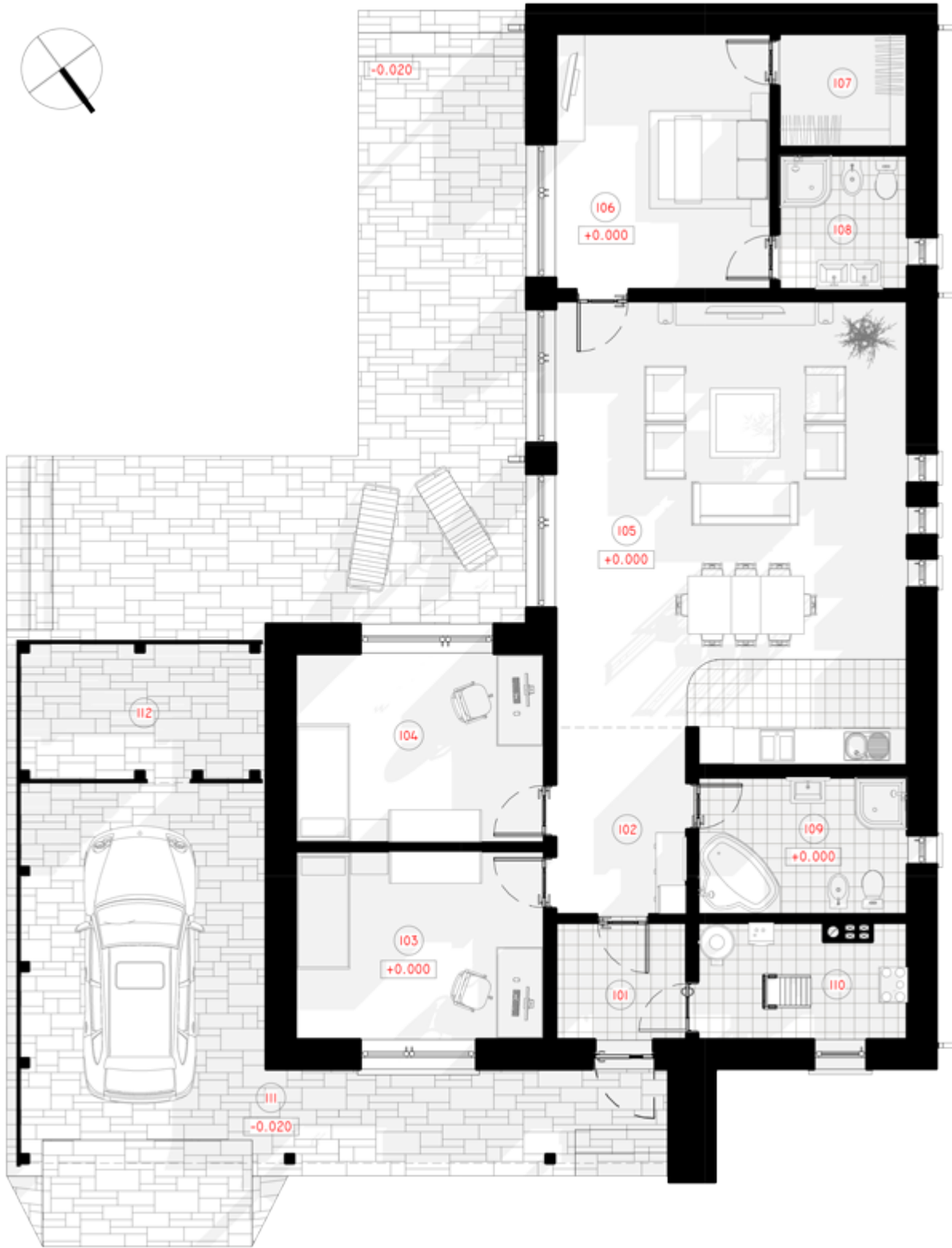
Contemporary home designs allow you to choose any type of roof. Considering reliable roofing, the most important thing is to take into account the local climatic conditions. A modern house project with a gable roof will be a great choice for those who appreciate functionality, reliability, and sustainability. The gable roof with a large slope does not hold raindrops, leaves, and snow. Undoubtedly a part of the comfort is natural light, terrace, and a nice view from the window. This single-storey house project is attractive with narrow but fairly long windows. 4.50 sq. meter tambour expands the space, helps to preserve heat in our penetrating climatic zone, and lets us easily reach the requirements of A + energy efficiency class.

Typical technical drawing will let you visualize your future house project, faster initiate the construction process. The unique L-shaped project will rationally fit into any kind of plot. The layout includes 127.35 square meters (90.77 square meters of living space). Well-thought-out architectural

solutions create a cozy, spacious living room combined with an open kitchen (46.67 square meters). Modern house project provides a 38, 84 sq. meters shed for the car and 9.87 sq. meters utility room.

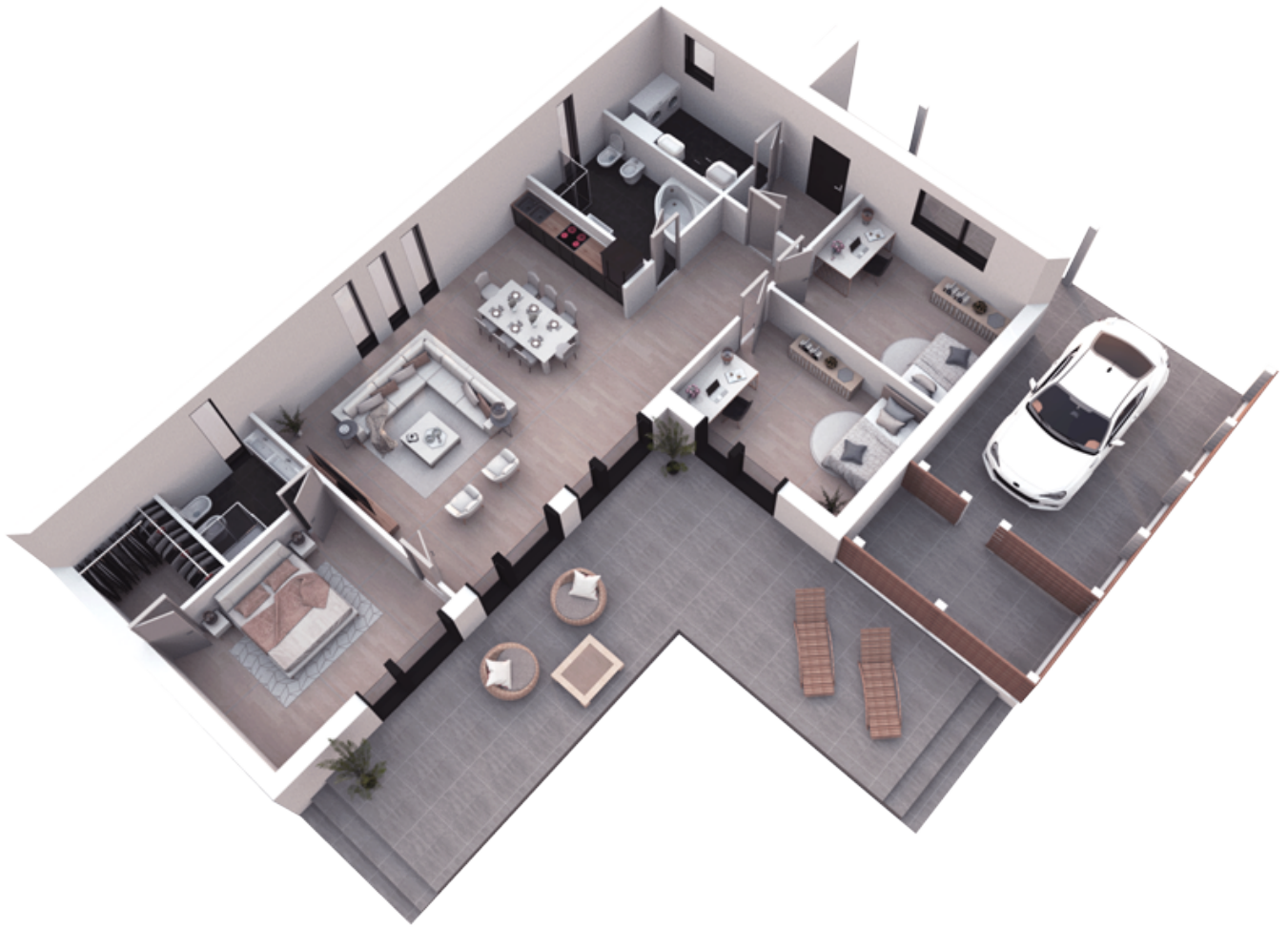






1ST FLOOR PLAN

| | |
|-------------------------|-----------------------------|
| 101 CORRIDOR | 4.50 m ² |
| 102 HALL-CORRIDOR | 7.21 m ² |
| 103 CHILDRENS ROOM | 13.91 m ² |
| 104 CHILDRENS ROOM | 13.91 m ² |
| 105 KITCHEN-LIVING ROOM | 46.67 m ² |
| 106 PARENTS BEDROOM | 16.28 m ² |
| 107 CLOSET | 4.29m ² |
| 108 BATHROOM | 5.08 m ² |
| 109 BATHROOM | 8.53m ² |
| 110 BOILER ROOM | 6.96 m ² |
| 111 CARPORT | 38.84 m ² |
| 112 WOODSHED | 9.87 m ² |
| TOTAL: | 176.06 m² |



3D PLAN