

# THE FLOWER BOX

LIVING AREA	90.45
TOTAL AREA	120.65
NUMBER OF FLOORS	1
ROOF SLOPE	1.4
BUILDING AREA	177.40
HOUSE LENGTH	13.03
HOUSE WIDTH	13.86
HOUSE HEIGHT	5.08

€ 2.928 € 2.420

## HOUSE PROJECT THE FLOWER BOX

Do you love freedom and always seek to expand your horizons? Do you feel euphoria, great happiness? Does your imagination have no limits? If you care about the beauty, aesthetics, and modern design of the building, a typical 120, 65 sq. meters single-storey house project is the right choice for you.

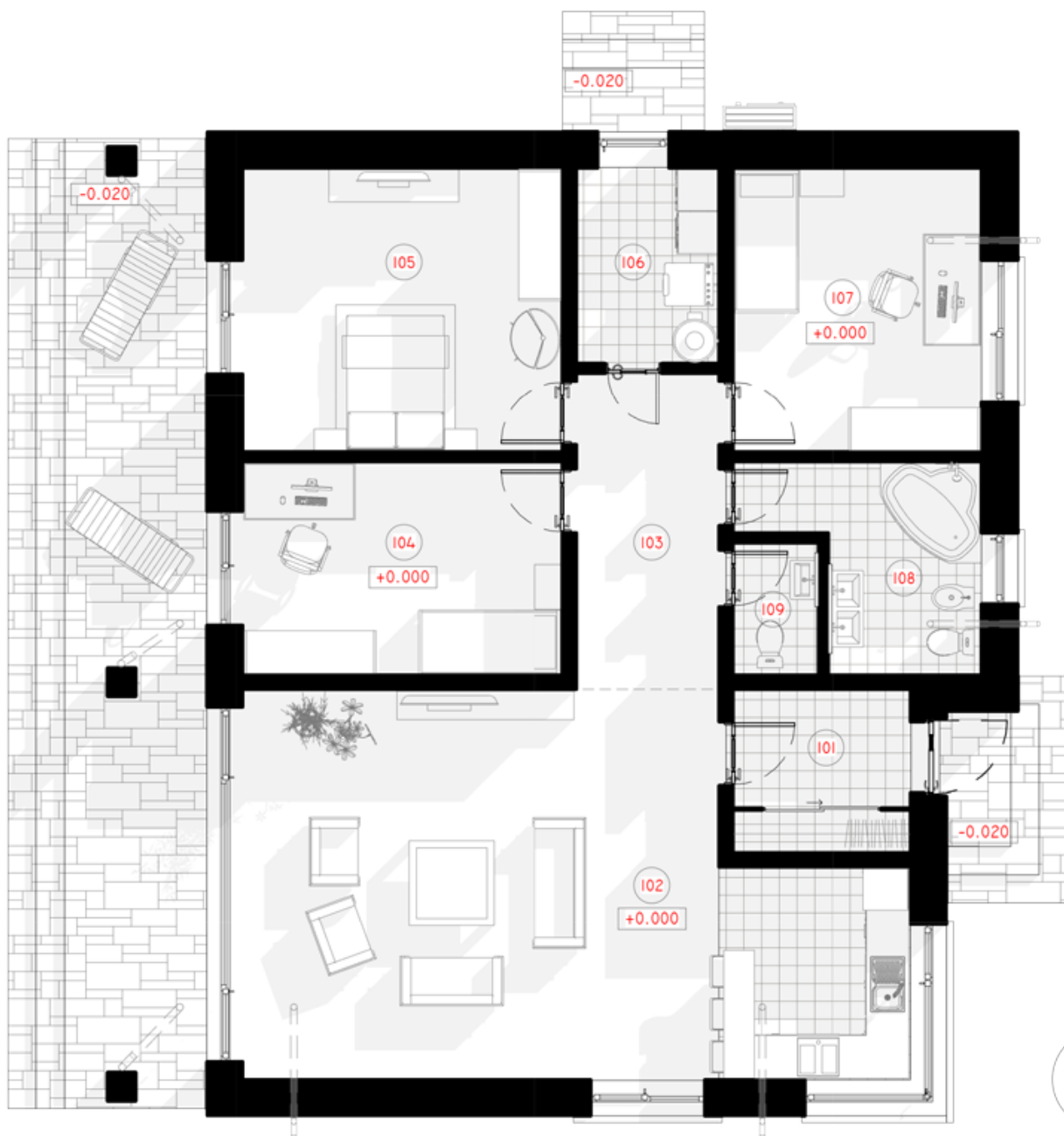
Do you require creative design, a sense of freedom, modern architecture, and functionality? Our team is committed to delivering efficient and cost-effective solutions. This single-storey house project is an ideal choice for the landlords of small plots. A flat roof saves every square meter of useful space. There is no slope, so the living area is efficiently used. This type of roof makes a perfect look of exclusive design. The 5.75 square meter tambour is necessary for the harsh Lithuanian weather. It is designed to stop the spread of cold into living space. The box-shaped modern house design suitable for buildings located in narrow "non-standard" areas, in the tight, minimalistic spaces. A flat roof can be operated on a sloping plot.

Modern house projects allow you to create comfort and convenience in the living space, recreation areas. There is plenty of space for many functional and utility rooms. The best orientation of the plot is when the street stays on the Northside, it is recommended to lay out family bedrooms to the East.





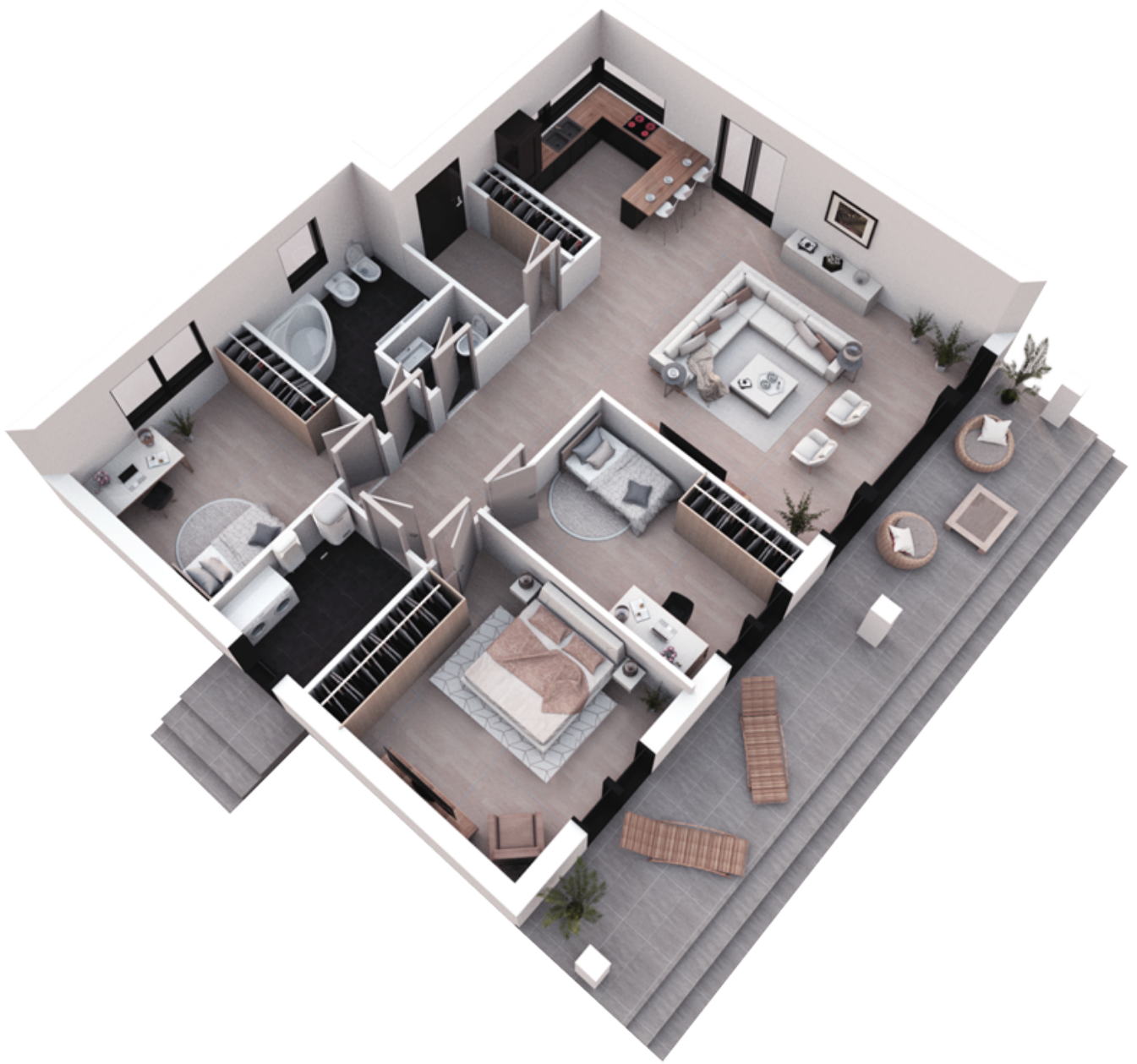




# 1ST FLOOR PLAN

101 CORRIDOR	5.75 m <sup>2</sup>
102 KITCHEN-LIVING ROOM	44.95 m <sup>2</sup>
103 HALL-CORRIDOR	8.90 m <sup>2</sup>
104 CHILDREN`S ROOM	18.50 m <sup>2</sup>

105 PARENTS' BEDROOM	18.00 m <sup>2</sup>
106 BOILER ROOM	5.50 m <sup>2</sup>
107 PARENTS' BEDROOM	14.00 m <sup>2</sup>
108 BATHROOM	7.82 m <sup>2</sup>
109 BATHROOM	2.23 m <sup>2</sup>
<b>TOTAL:</b>	120.65 m <sup>2</sup>



**3D PLAN**