

# THE SWEET CUPCAKE LOFT

LIVING AREA	39.39
TOTAL AREA	49.84
NUMBER OF FLOORS	2
ROOF SLOPE	45
BUILDING AREA	61.48
LENGTH	8.75
WIDTH	7.05
HEIGHT	8.50

PRICE FROM

€ 12.500

## ADVANTAGES

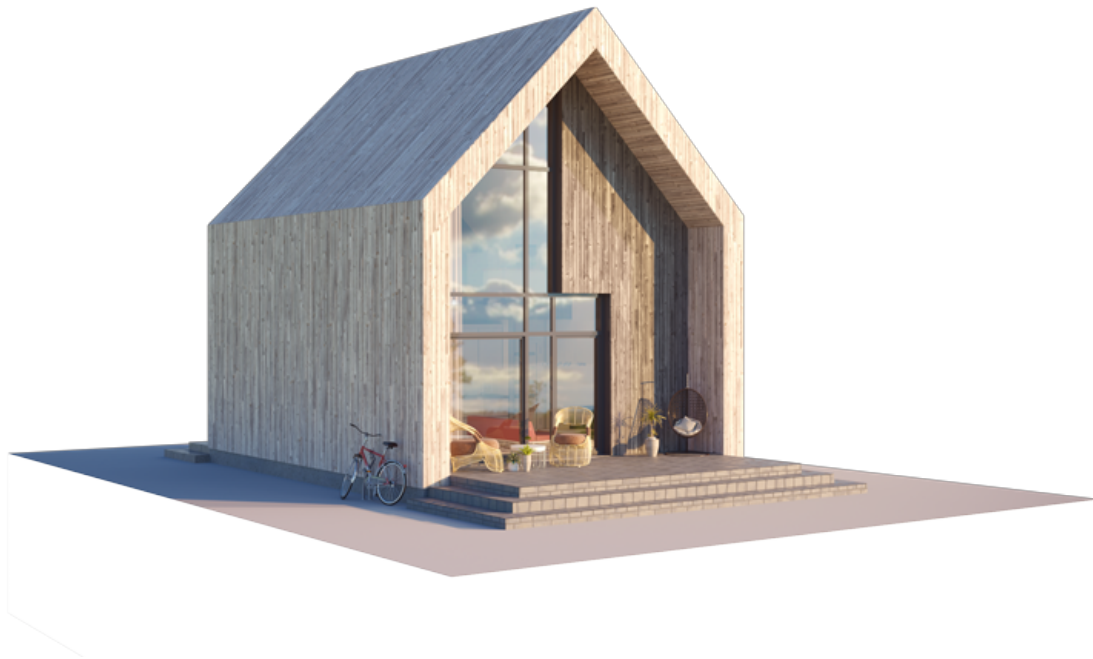
THE SWEET CUPCAKE LOFT



The Sweet Cupcake Loft House is a special example of LGSF's technological superiority. Remember - this house is not built, it is made. But it's everything you'd expect from a traditional two-storey house, and much more. It's good to live in a modern house that has been produced in an environmentally friendly way, using no natural resources and leaving no waste.

Now ask yourself what the traditional gabled roof of this house reminds you of. Yes, the answer lies in the name of this house model. The Sweet Cupcake loft design will help you to emphasise your values: the desire to dream, to inspire others, to foster harmony and to believe in the power of romance. Let life in the loft be as sweet as a cupcake.

The traditional shape of the Sweet Cupcake House represents a cube transformed by an upward force. The result is a nostalgic symmetrical gable roof that symbolises purity and traditional home values. Sweet Cupcake is a modern interpretation of a traditional gable-roofed house. The Sweet Cupcake design strikes a delicate balance between traditional, romantic home comfort and innovative exterior solutions with extra-large windows. This concept is designed for people who know how to dream and see more good than bad in everyday life. Even if the rest of the world outside the walls of your home is going mad. The Sweet Cupcake design will help you to aesthetically emphasise your values: positivity, personal integrity, the ability to dream and inspire others, and the harmony of life.







# 1ST FLOOR PLAN

101 TAMBOURINE	3,37 m <sup>2</sup>
102 AUXILIARY ROOM	3,13 m <sup>2</sup>
103 SANITARY ROOM	3,96 m <sup>2</sup>
104 LIVING ROOM - KITCHEN	21,28 m <sup>2</sup>
<b>TOTAL:</b>	<b>31,74 m<sup>2</sup></b>



# 2ND FLOOR PLAN

201 BEDROOM	18,11 m <sup>2</sup>
<b>TOTAL:</b>	18,11 m <sup>2</sup>