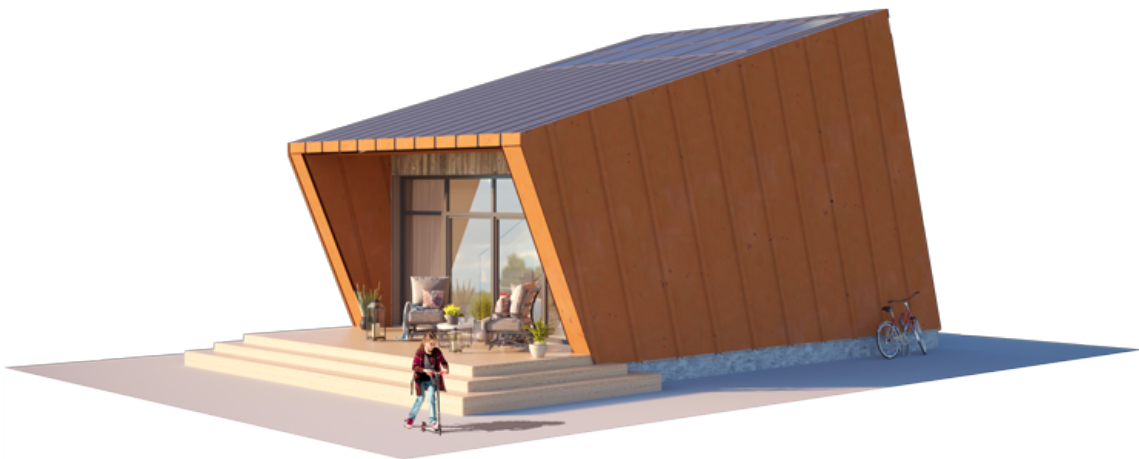
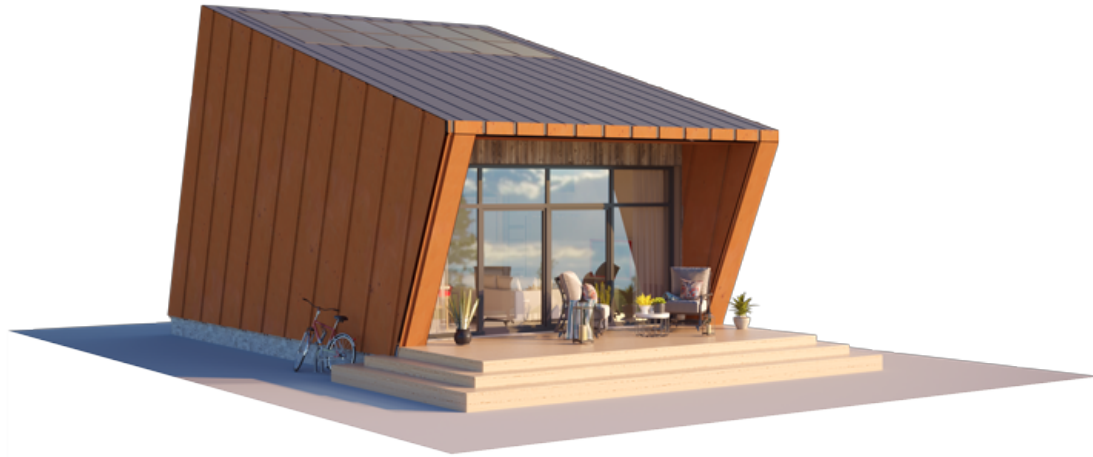


NPS

THE WILD WAVE LOFT

LIVING AREA	38.58
TOTAL AREA	49.04
NUMBER OF FLOORS	2
ROOF SLOPE	16
BUILDING AREA	67,82
HOUSE LENGTH	11,50
HOUSE WIDTH	7,05
HOUSE HEIGHT	6,90

€ 12.500





BASIC



WALLS - LPPK	-
OVERLAY - LPPK	-
STAIRS - LPPK	-
ROOF - LPPK	-
PRICE	
€12.500	

LPPK - Lightweight thin-walled frame construction.

Prices are for prefabricated structures ready for assembly at the factory.

Prices are without garage and carport.

ECONOMIC



WALLS - LPPK	-
OVERLAY - LPPK	-
ROOF - LPPK	-
STAIRS - LPPK	-
INSULATION - MULTILAYER PANELS	-
WINDOWS, EXTERIOR DOORS - PVC	-
PRICE €25.700	

LPPK - Lightweight thin-walled frame construction.

Prices are negotiated according to the choice of materials. Prices are for prefabricated structures ready for assembly at the factory.

Prices are without garage and carport.

STANDART



WALLS - LPPK	-
--------------	---

OVERLAY - LPPK	-
----------------	---

STAIRS - LPPK	-
---------------	---

ROOF - LPPK	-
-------------	---

INSULATION - MULTILAYER PANELS	-
--------------------------------	---

WINDOWS, EXTERIOR DOORS, PVC	-
------------------------------	---

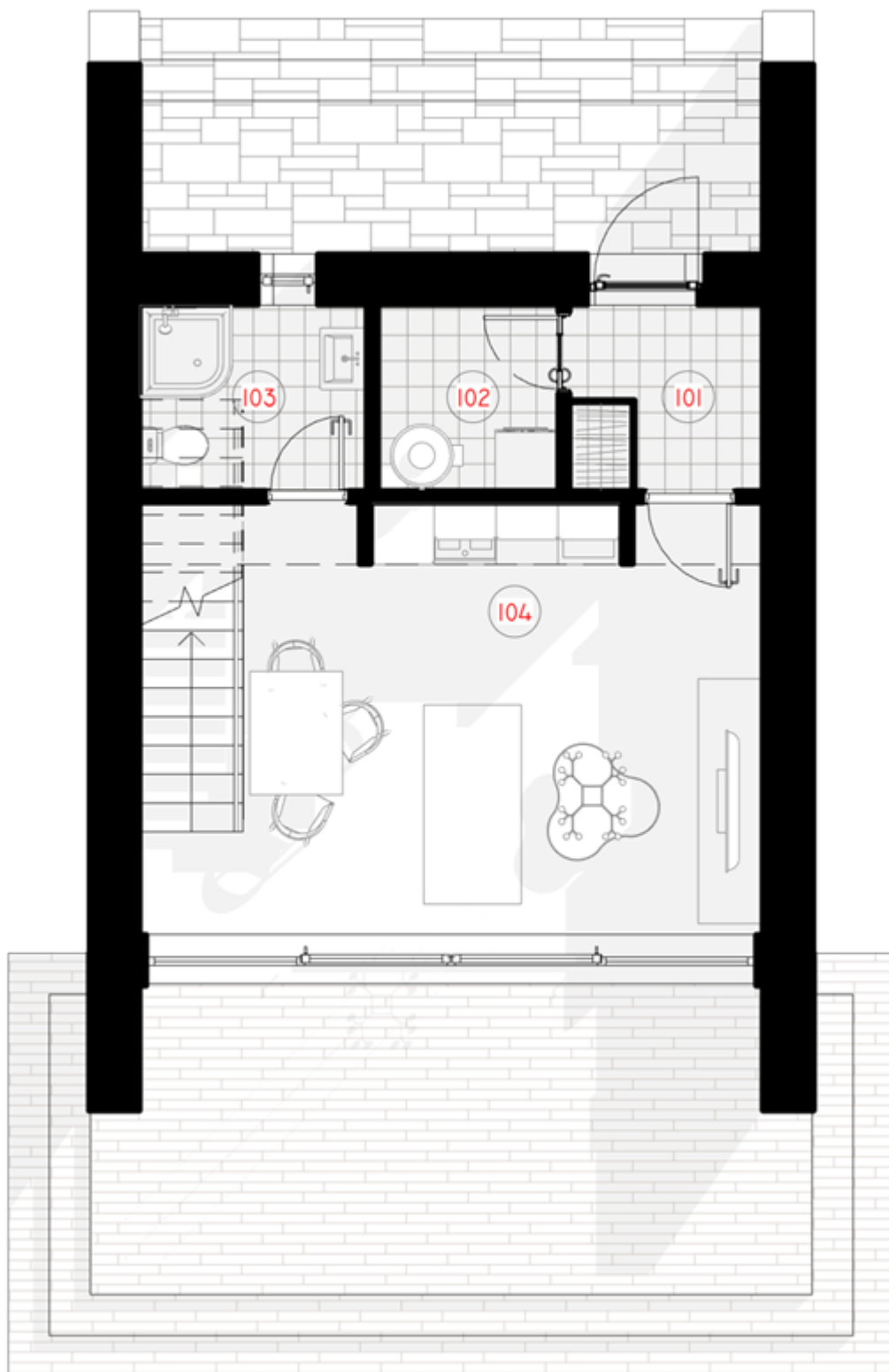
FACADE DECORATION	-
-------------------	---

PRICE	
€34.500	

LPPK - Lightweight thin-walled frame construction.

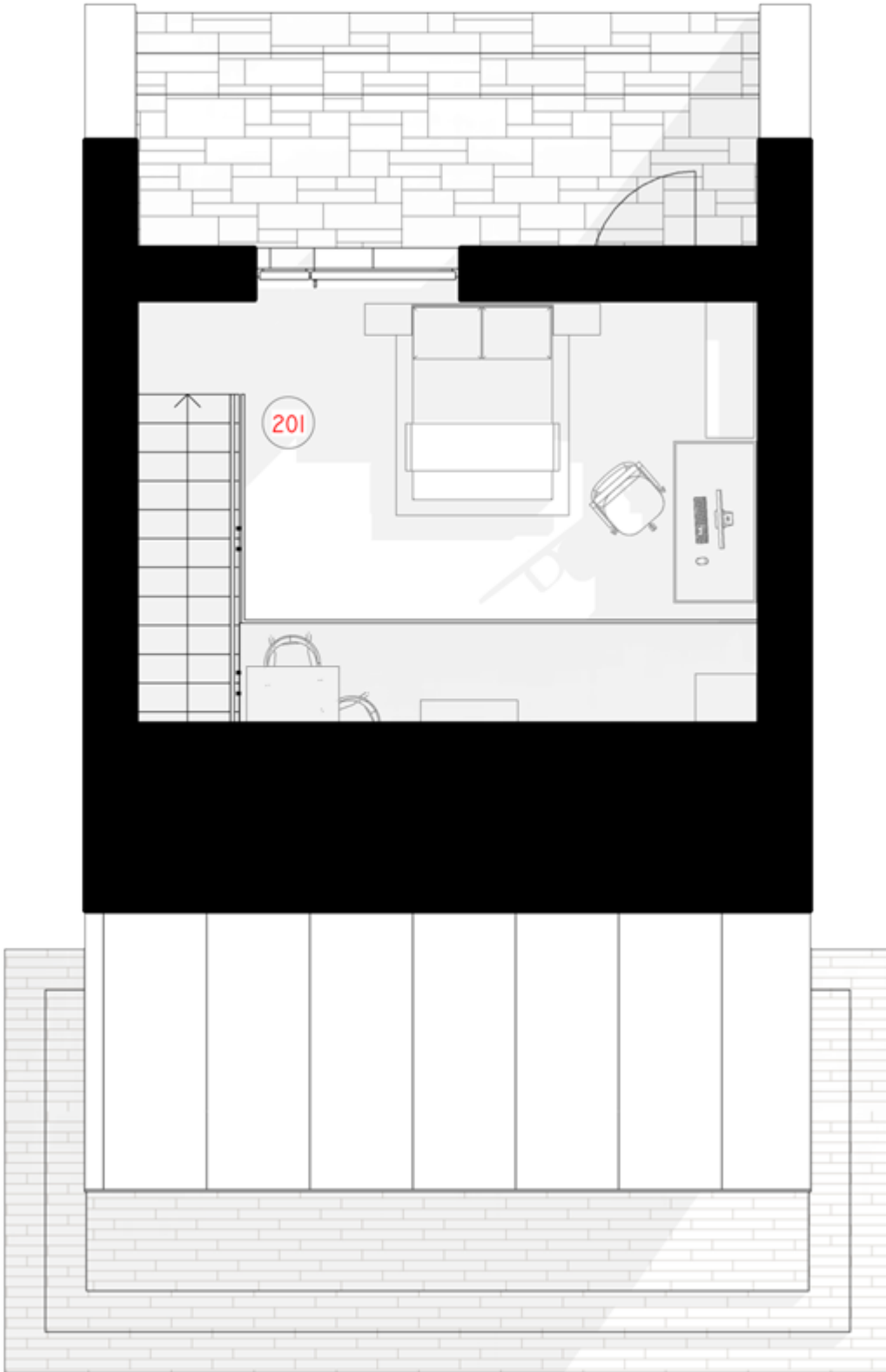
Prices are negotiated according to the choice of materials. Prices are for prefabricated structures ready for assembly at the factory.

Prices are without garage and carport.



1ST FLOOR PLAN

101 TAMBOURINE	3,37 m ²
102 AUXILIARY ROOM	3,13 m ²
103 SANITARY ROOM	3,96 m ²
104 LIVING ROOM - KITCHEN	22,07 m ²
TOTAL:	32,52 m²



2ND FLOOR PLAN

201 BEDROOM	16,52 m ²
TOTAL:	16,52 m²
