

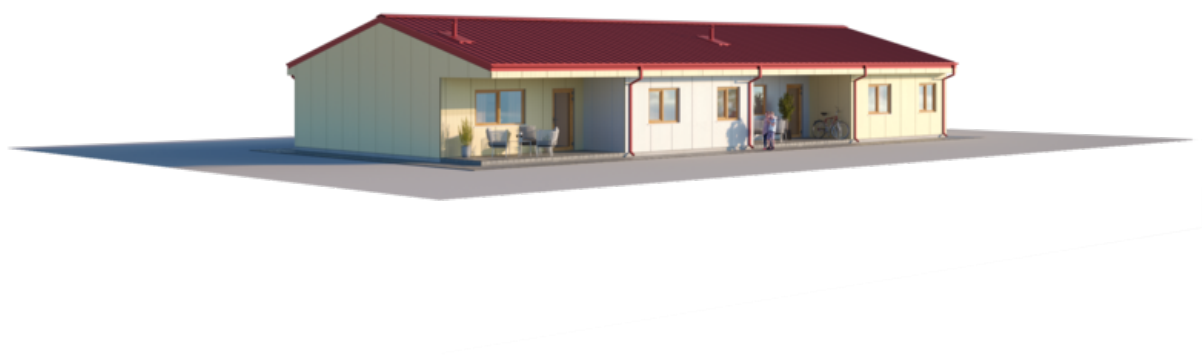


SOCIAL HOUSE

| | |
|------------------|--------|
| LIVING AREA | 155.31 |
| TOTAL AREA | 184.16 |
| NUMBER OF FLOORS | 1 |

PRICE FROM

€ 24.636







BASIC



| | |
|----------------|---|
| WALLS - LPPK | - |
| OVERLAY - LPPK | - |
| STAIRS - LPPK | - |
| ROOF - LPPK | - |
| PRICE | |
| €24.636 | |

LPPK - Lightweight thin-walled frame construction.

Prices are for prefabricated structures ready for assembly at the factory.

Prices are without garage and carport.

STANDART

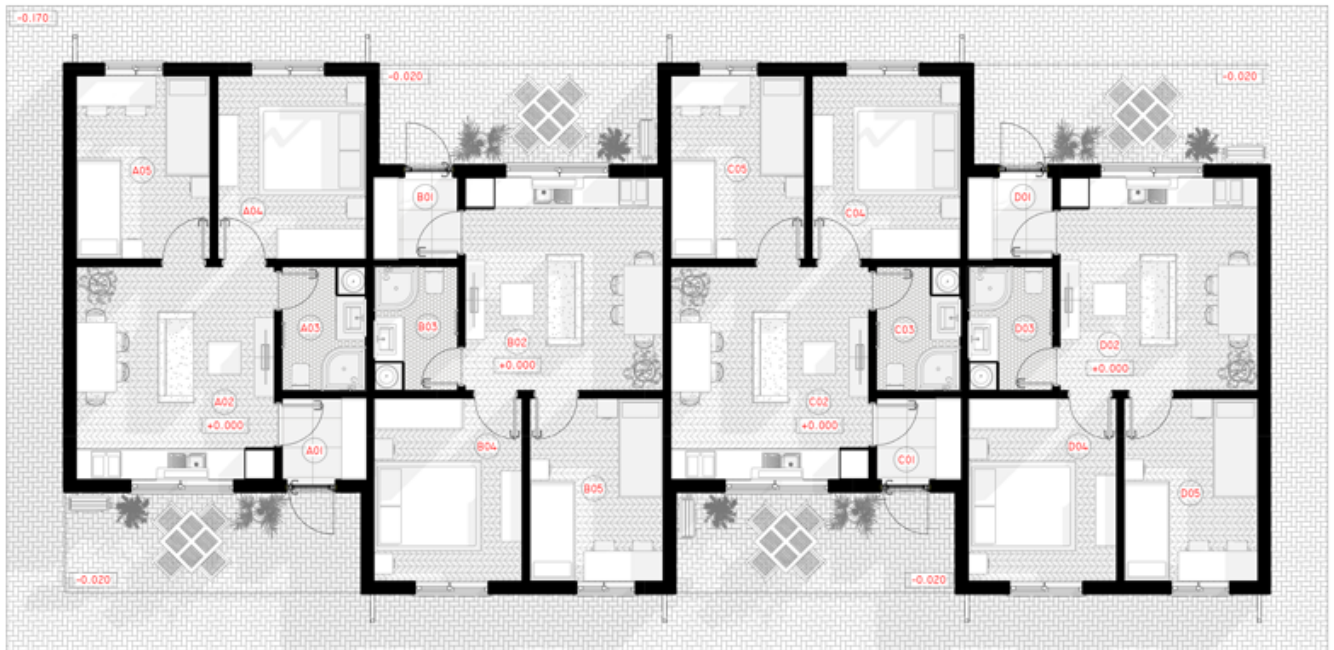


| | |
|--------------------------------|---|
| WALLS - LPPK | - |
| OVERLAY - LPPK | - |
| STAIRS - LPPK | - |
| ROOF - LPPK | - |
| INSULATION - MULTILAYER PANELS | - |
| WINDOWS, EXTERIOR DOORS, PVC | - |
| FACADE DECORATION | - |
| PRICE | |
| €58.067 | |

LPPK - Lightweight thin-walled frame construction.

Prices are negotiated according to the choice of materials. Prices are for prefabricated structures ready for assembly at the factory.

Prices are without garage and carport.



1ST FLOOR PLAN

| | | |
|--------------|-----------------------|----------------------------|
| 01 | TAMBOUR | 2.89 m ² |
| 02 | LIVING - DINNING ROOM | 17.41 m ² |
| 03 | BATHROOM | 4.32 m ² |
| 04 | MASTER BEDROOM | 11.27 m ² |
| 05 | BEDROOM | 10.15 m ² |
| VISO: | | 46.04 m² |