

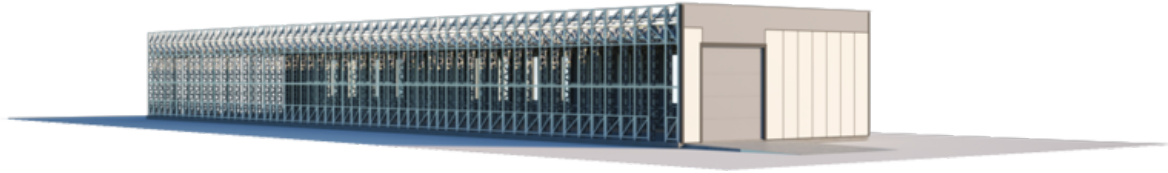


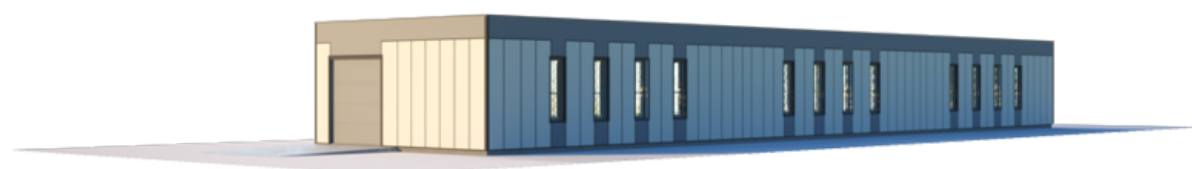
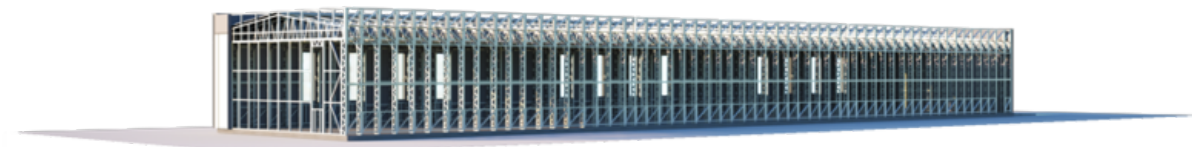
PREPARABLE WAREHOUSE "L"

NUMBER OF FLOORS	1
ROOF SLOPE	7
BUILDING AREA	333.75
LENGTH	56.4
WIDTH	12.34
HEIGHT	6.5

PRICE FROM

€ 45.158





BASIC



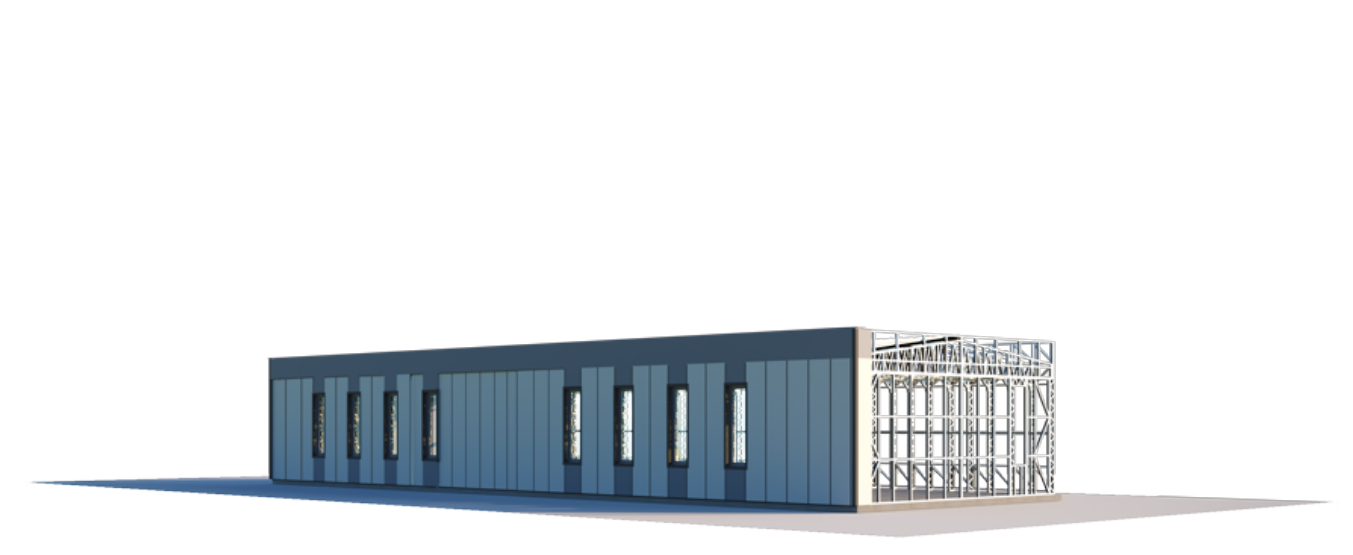
WALLS - LPPK	-
OVERLAY - LPPK	-
ROOF - LPPK	-
PRICE	
€45.158	

LPPK - Lightweight thin-walled frame construction.

Prices are for prefabricated structures ready for assembly at the factory.

Prices are adjusted on the day of the order according to the prices of materials valid at that time

ECONOMIC



WALLS - LPPK	-
ROOF - LPPK	-
INSULATION - MULTILAYER PANELS (100 MM)	-
WINDOWS, EXTERIOR DOORS - PVC	-
PRICE	
€149.700	

LPPK - Lightweight thin-walled frame construction.

Prices are for prefabricated structures ready for assembly at the factory. Prices are adjusted on the day of the order according to the prices of materials valid at that time.

STANDART



DRILLED FOUNDATION MATERIALS	-
LSGF, THERMAL INSULATION	-
WINDOWS, DOORS, GATES	-
INSULATION - MULTILAYER PANELS (100 MM)	-
TIN FOLDERS	-
PRICE	
€297.000	

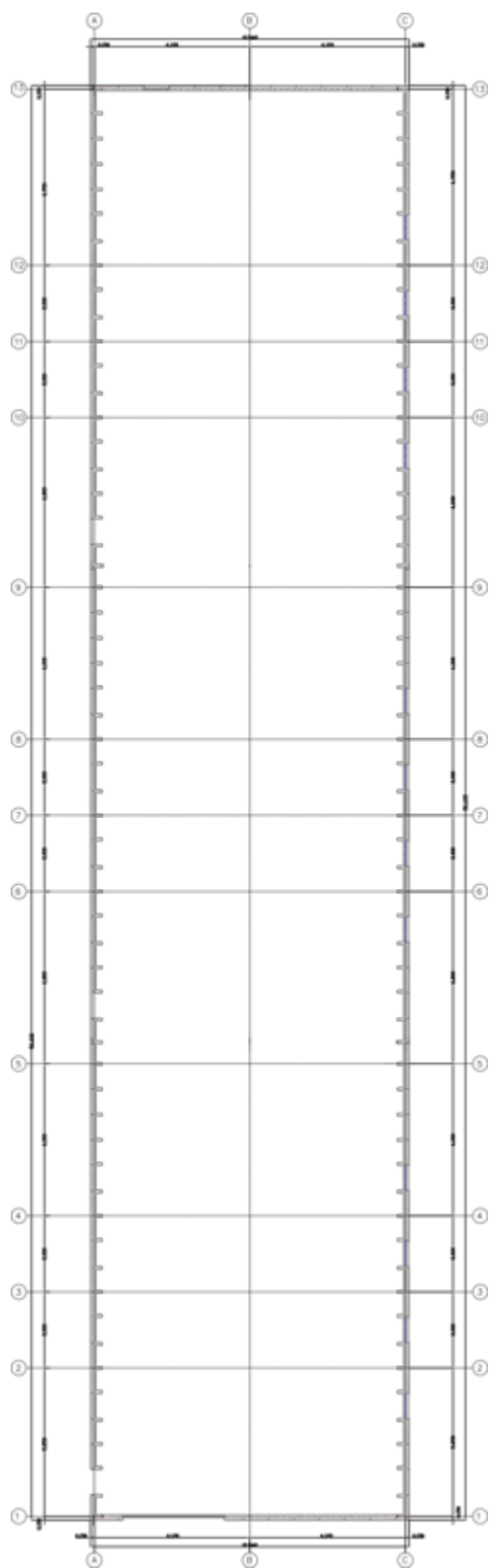
LPPK - Lightweight thin-walled frame construction.

Work, mechanisms - €29.730.

Prices are for prefabricated structures ready for assembly at the factory.

The price includes detailed assembly and construction drawings.

The prices are adjusted on the day of the order according to the prices of the materials valid in the market at that time.



1ST FLOOR PLAN

101 AREA	672 m ²
TOTAL:	672 m ²