

**NFS**

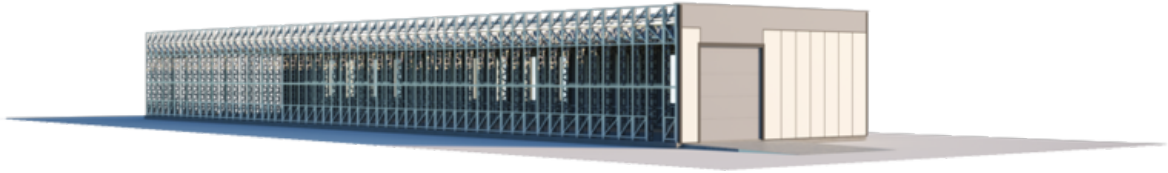
# **PREPARABLE WAREHOUSE "L"**

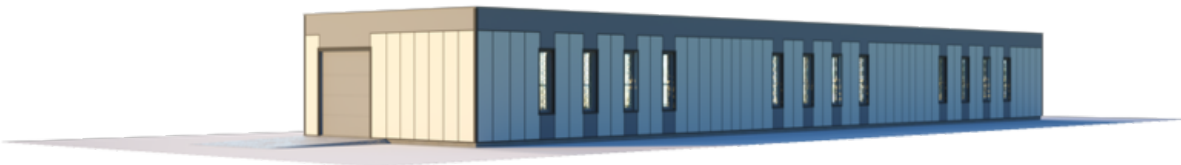
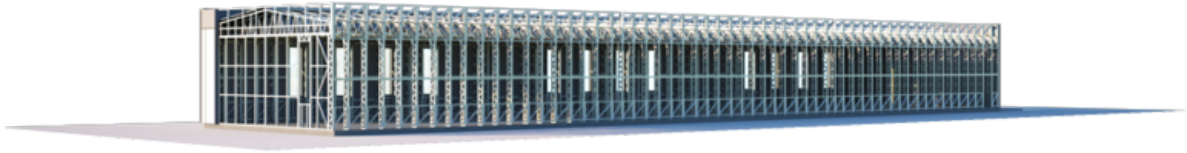
---

NUMBER OF FLOORS	1
ROOF SLOPE	7
BUILDING AREA	333.75
HOUSE LENGTH	56.4
HOUSE WIDTH	12.34
HOUSE HEIGHT	6.5

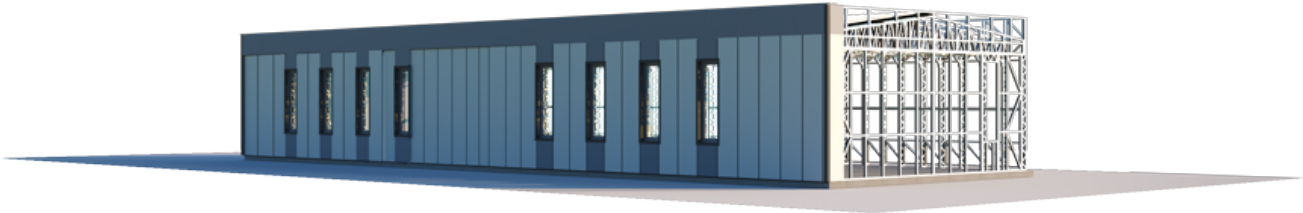
---

**€ 45.158**





# BASIC



---

WALLS - LPPK -

---

OVERLAY - LPPK -

---

ROOF - LPPK -

---

PRICE  
€45.158

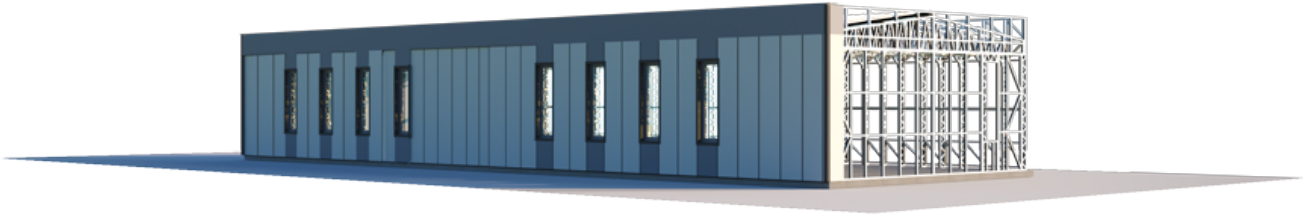
---

LPPK - Lightweight thin-walled frame construction.

Prices are for prefabricated structures ready for assembly at the factory.

Prices are adjusted on the day of the order according to the prices of materials valid at that time

# ECONOMIC



---

WALLS - LPPK	-
--------------	---

---

ROOF - LPPK	-
-------------	---

---

INSULATION - MULTILAYER PANELS (100 MM)	-
---	---

---

WINDOWS, EXTERIOR DOORS - PVC	-
-------------------------------	---

---

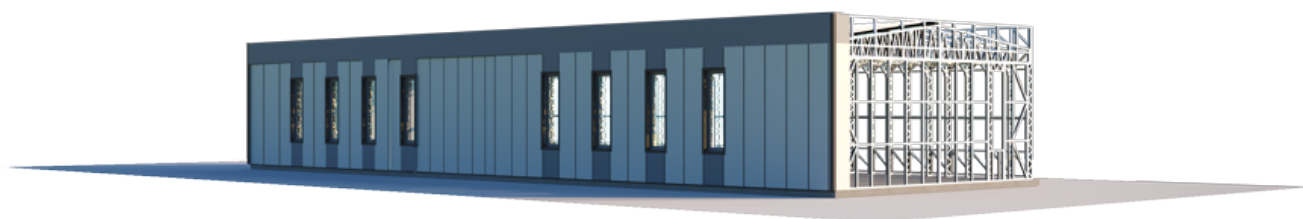
PRICE	
€149.700	

---

LPPK - Lightweight thin-walled frame construction.

Prices are for prefabricated structures ready for assembly at the factory. Prices are adjusted on the day of the order according to the prices of materials valid at that time.

# STANDART



---

DRILLED FOUNDATION MATERIALS

-

---

LSGF, THERMAL INSULATION

-

---

WINDOWS, DOORS, GATES

-

---

INSULATION - MULTILAYER PANELS (100 MM)

-

---

TIN FOLDERS

-

---

PRICE  
€297.000

---

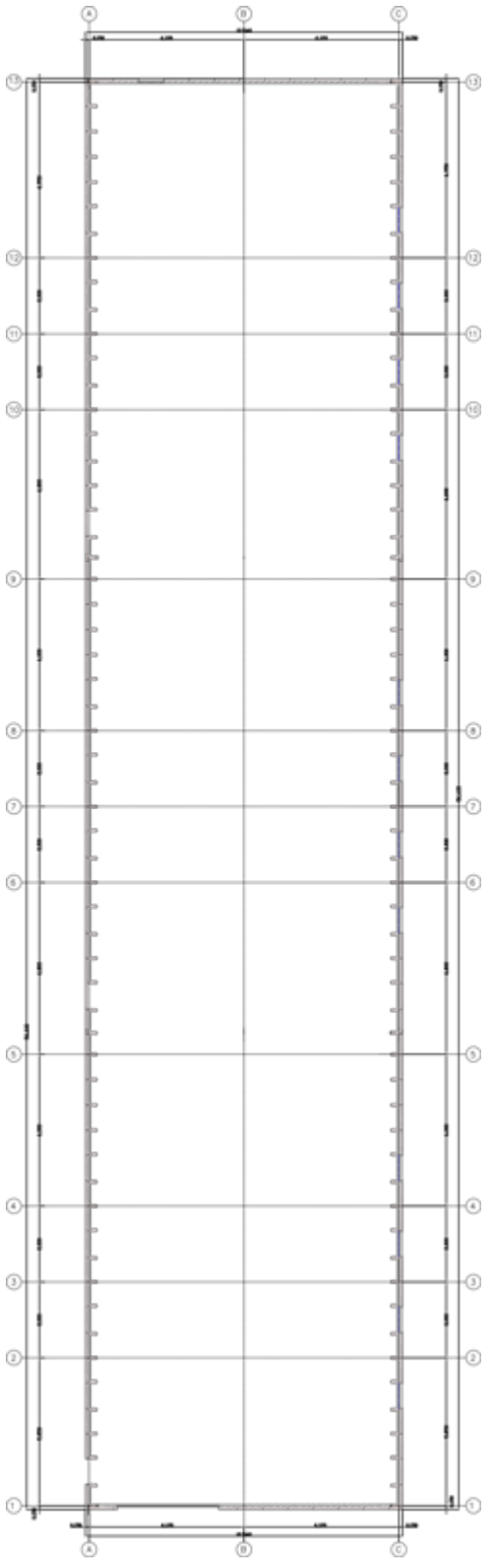
LPPK - Lightweight thin-walled frame construction.

**Work, mechanisms - €29.730.**

Prices are for prefabricated structures ready for assembly at the factory.

The price includes detailed assembly and construction drawings.

The prices are adjusted on the day of the order according to the prices of the materials valid in the market at that time.



# 1ST FLOOR PLAN

---

101 AREA

672 m<sup>2</sup>

---

**TOTAL:**

672 m<sup>2</sup>

---