

NPS

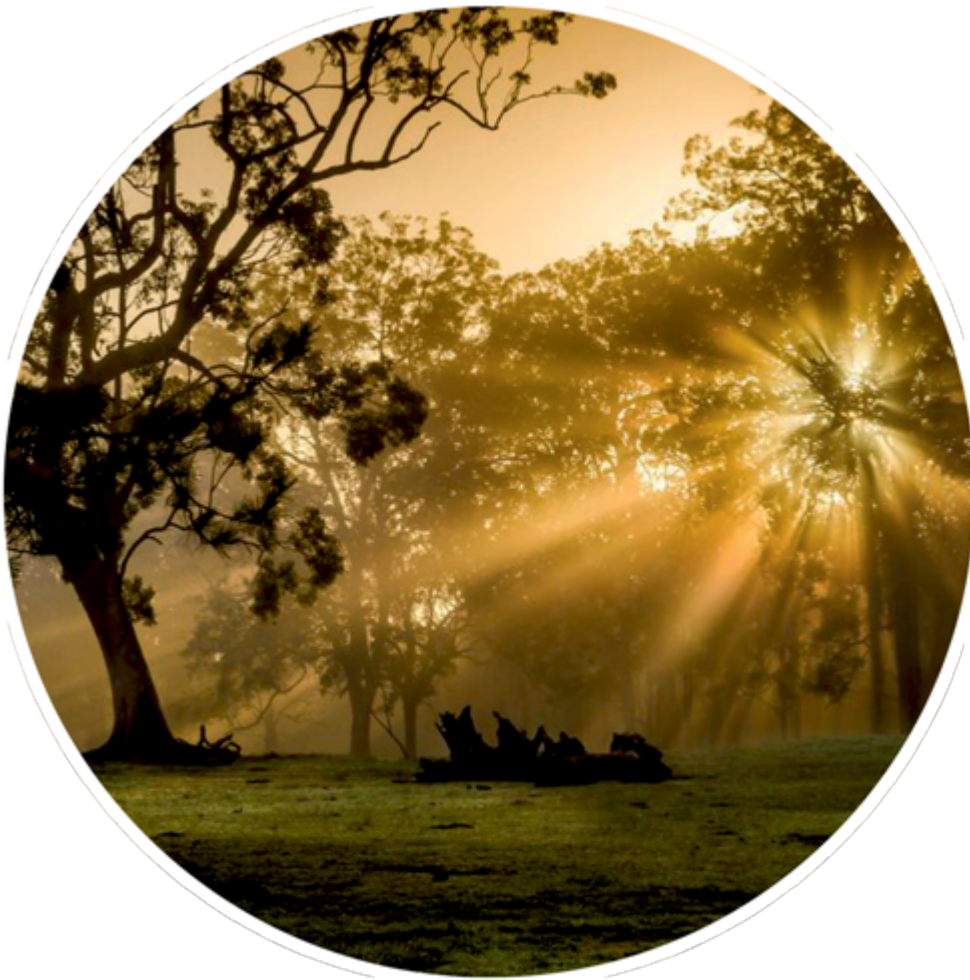
THE SUNBEAM SPECTACLE EXTRA SPACIOUS II

LIVING AREA	59.87
TOTAL AREA	79.61
NUMBER OF FLOORS	1
ROOF SLOPE	8/25.3/34.4
BUILDING AREA	150.14
HOUSE LENGTH	11.40
HOUSE WIDTH	13.95
HOUSE HEIGHT	5.86

€ 18.688

BENEFITS

THE SUNBEAM SPECTACLE EXTRA SPACIOUS II



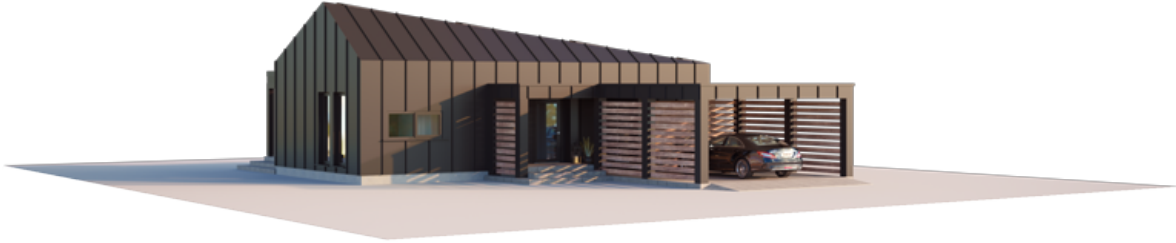
This modular house is designed for newcomers who appreciate beauty in simplicity and are looking for a cost-effective and long-lasting home. The façades are dominated by vertical forms and the architecture is restrained and seamless.

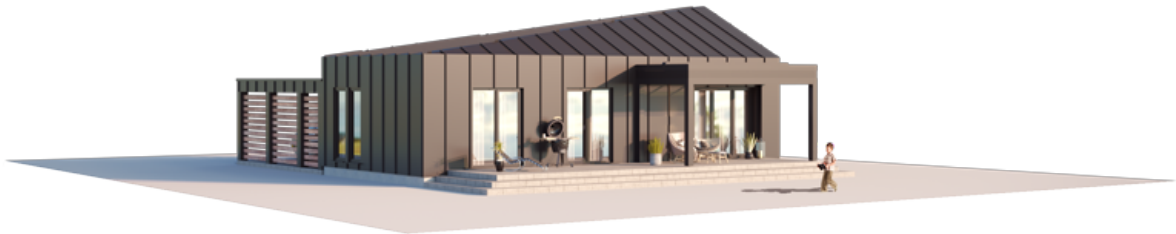
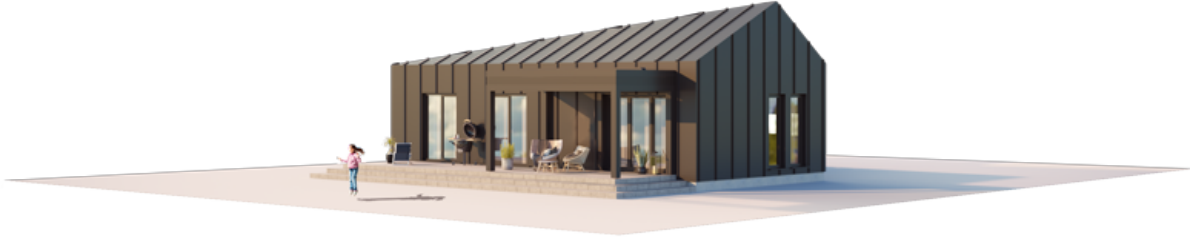
THE SUNBEAM SPECTACLE SPECTACLE EXTRA SPACIOUS II sThe prefabricated house is small, with a total area of 79.61 sqm and 59.87 sqm of living space. It is ideal for a small family or for people living alone. It can also be built as a second home for a seaside holiday or as a garden house.

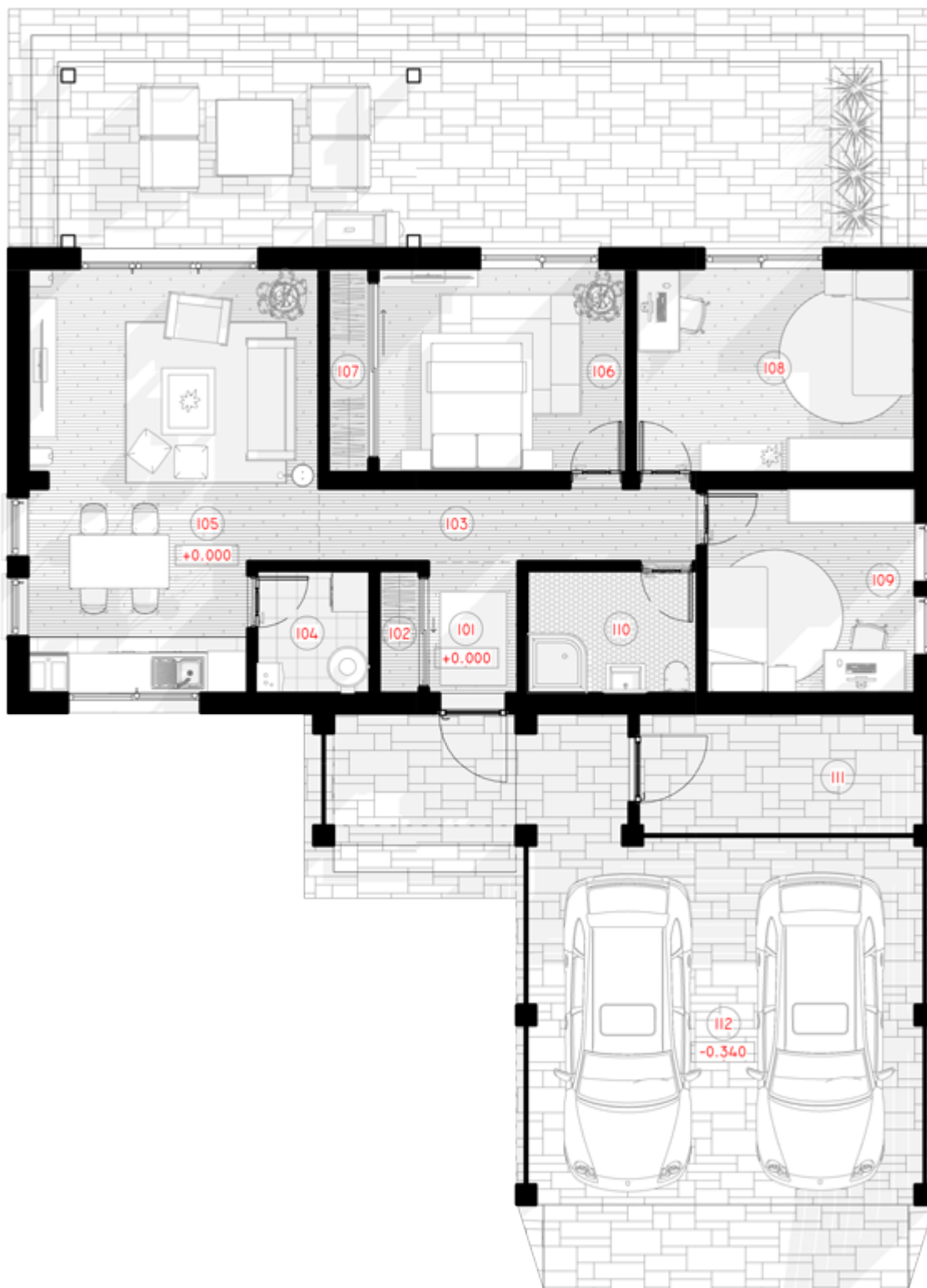
Its simple but practical layout will appeal to those looking for classic solutions - a cosy terrace, a carport, a special carport for farm equipment, while the interior spaces are conveniently divided into bedrooms, leisure areas and technical rooms.

The building has the highest energy class A++, is airtight and warm. Its structural and engineering solutions are fully adapted to harsher climates, so there is no need to worry about the negative effects of precipitation, cold, wind or other natural phenomena during the building's operation.

Framed houses can be sold fully finished or partially finished. In order to make the choice more convenient for our customers, we have distinguished three levels of fitting for **THE SUNBEAM SPECTACLE**: Basic, Economic, Standard. The Basic level consists of walls, slabs, roof and stairs in a lightweight thin-walled frame construction. "In the Economic level, the building is additionally insulated with sandwich panels and windows and external doors are installed. Meanwhile, the façade finishes are also taken care of in the Standard level.







1ST FLOOR PLAN

101 TAMBOUR	2.66 m ²
102 WARDROBE	1.11 m ²
103 HALL	6.28 m ²
104 BOILER ROOM	3.12 m ²
105 LIVING ROOM - KITCHEN	25.81 m ²
106 PARENTS BEDROOM	11.49 m ²
107 WARDROBE	1.88 m ²
108 ROOM	12.92 m ²
109 ROOM	9.65 m ²
110 BATHROOM	4.70 m ²
111 SHELTER FOR FARM INVENTORY	8.11 m ²
112 CARPORT	40.87 m ²
TOTAL:	128.59 m²